

- STRUCTURAL NOTES**
- CONCRETE: 28 DAY COMPRESSIVE STRENGTH  $f'c = 4,000$  psi  
STRIPPING STRENGTH  $f'ci = 2,800$  psi (70% OF DESIGN STRENGTH)
  - REBAR: ASTM A-706 GRADE 60
  - WWF: ASTM A-185 GRADE 65 (AASHTO M55)
  - DESIGN: ACI-318-11 BUILDING CODE
  - LOADS: ASTM C-857 "MINIMUM STRUCTURAL DESIGN LOADING FOR UNDERGROUND PRECAST CONCRETE UTILITY STRUCTURES" 22.5 kip STANDARD DUTY LOAD PER WSDOT STANDARD SPECIFICATIONS SECTION 9-29.2(5)  
120 pcf SOIL DENSITY  
40 pcf E.F.P. LATERAL SOIL PRESSURE ABOVE WATERTABLE  
80 pcf E.F.P. LATERAL SOIL PRESSURE BELOW WATERTABLE  
113 psf LIVE LOAD SURCHARGE ABOVE 8'-0" SOIL DEPTH TOP OF VAULT VAULT AT FINISHED GRADE  
WATERTABLE 5'-0" BELOW FINISHED GRADE (ASSUMED)

- GENERAL NOTES**
- CUSTOMER TO:  
VERIFY ALL VAULT FEATURES  
DO ALL GROUTING & EPOXY OF VAULTS, HOLES & SEAMS (USING 3,000 psi NON-SHRINK GROUT)  
SUPPLY & INSTALL ALL PIPING & ELECTRICAL  
INSTALL ALL LADDERS  
DO ALL PAINTING

**PULLING IRON CAPACITY**

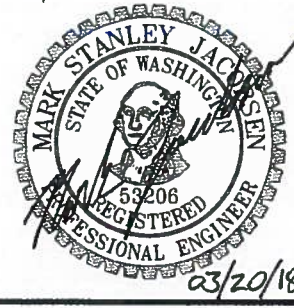
|                    |
|--------------------|
| 1,000 lbs WORKING  |
| 2,000 lbs ULTIMATE |

**SHIPPING WEIGHT**

|                    |           |
|--------------------|-----------|
| DOOR ASSEMBLY:     | 205 lbs   |
| SMALL CABLE VAULT: | 1,480 lbs |
| TOTAL:             | 1,685 lbs |

**HARDWARE NOTE**  
NUTS, BOLTS AND WASHERS SHALL BE 304 OR 316 STAINLESS STEEL

**APPROVED**  
Washington State Department of Transportation  
HQ Traffic Operations Office  
BY: [Signature] DATE: 3/20/2018



**Oldcastle Precast**  
P.O. BOX 580 ALBUQU, WA 98071-0580  
PHONE: 800-862-1338 FAX: 253-730-4291

THIS DOCUMENT IS THE PROPERTY OF OLDCASTLE PRECAST, INC. IT IS CONFIDENTIAL, SUBMITTED FOR REFERENCE PURPOSES ONLY, AND SHALL NOT BE USED IN ANY WAY INJURIOUS TO THE INTERESTS OF OLDCASTLE PRECAST, INC. OR WITHOUT THE WRITTEN PERMISSION OF OLDCASTLE PRECAST, INC. COPYRIGHT © 2014 OLDCASTLE PRECAST, INC. ALL RIGHTS RESERVED.

**SMALL CABLE VAULT - WSDOT**  
CUSTOMER LAYOUT

STANDARD PRODUCT

CUSTOMER  
WSDOT

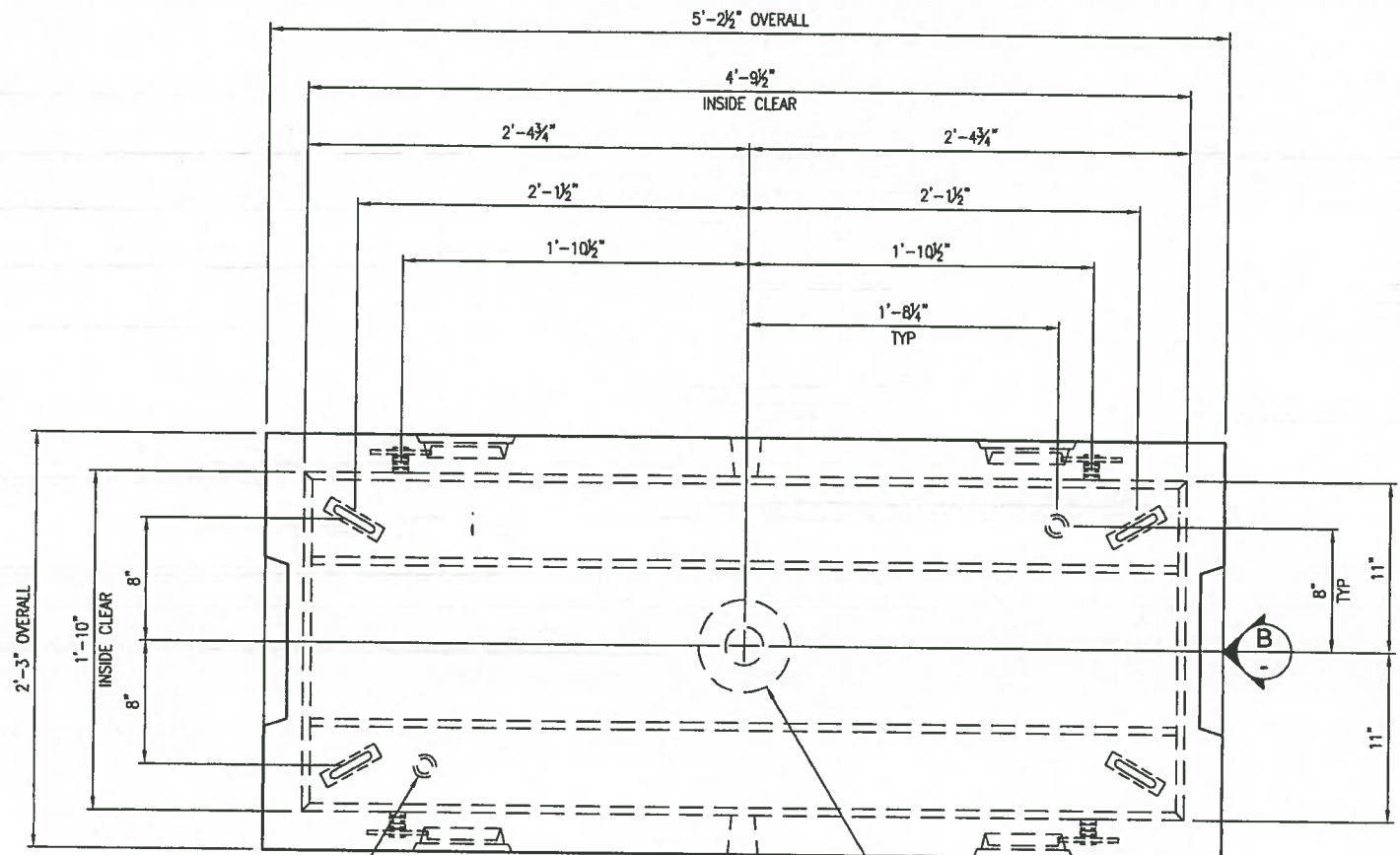
| DATE    | MAILED | DRAWN | ENGINEER | CHECKED | MAILED ORDER |
|---------|--------|-------|----------|---------|--------------|
| 11/5/14 |        | WS    |          |         |              |

DRAWING NUMBER: 010-X802410-001

REVISION D: REV DATE 3/19/16

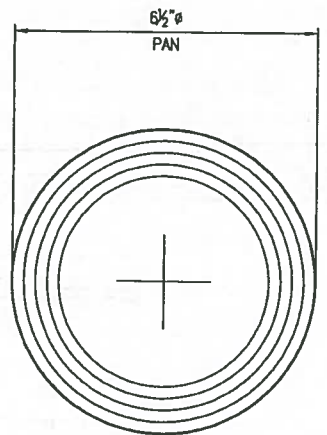
SHEET 1 OF 1

| D        | REVISED DOOR REFERENCE NUMBER | CJC |
|----------|-------------------------------|-----|
| REVISION | DESCRIPTION                   | BY  |

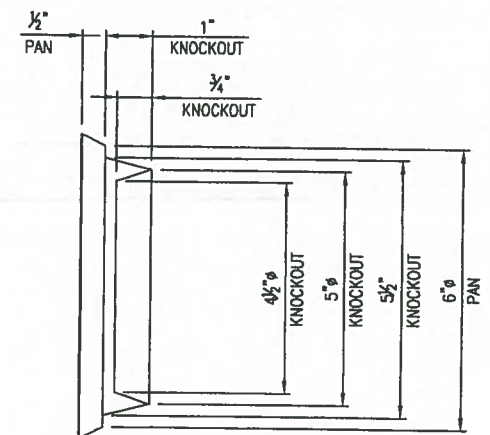


1" x 2" DEEP GROUND ROD KNOCKOUT (2) PLACES  
 6" x 1/2" DEEP SUMP w/ 2.5" DIA. DRAIN HOLE

PLAN VIEW  
 LAYOUT (SHOWN AS POURED)



PAN & 5" DIA. KNOCKOUT DETAIL  
 (KNOCKOUT SAME AS 645 CABLE BASE 010-0090032-Q01)



PRODUCT WEIGHT  
 1,480 LBS

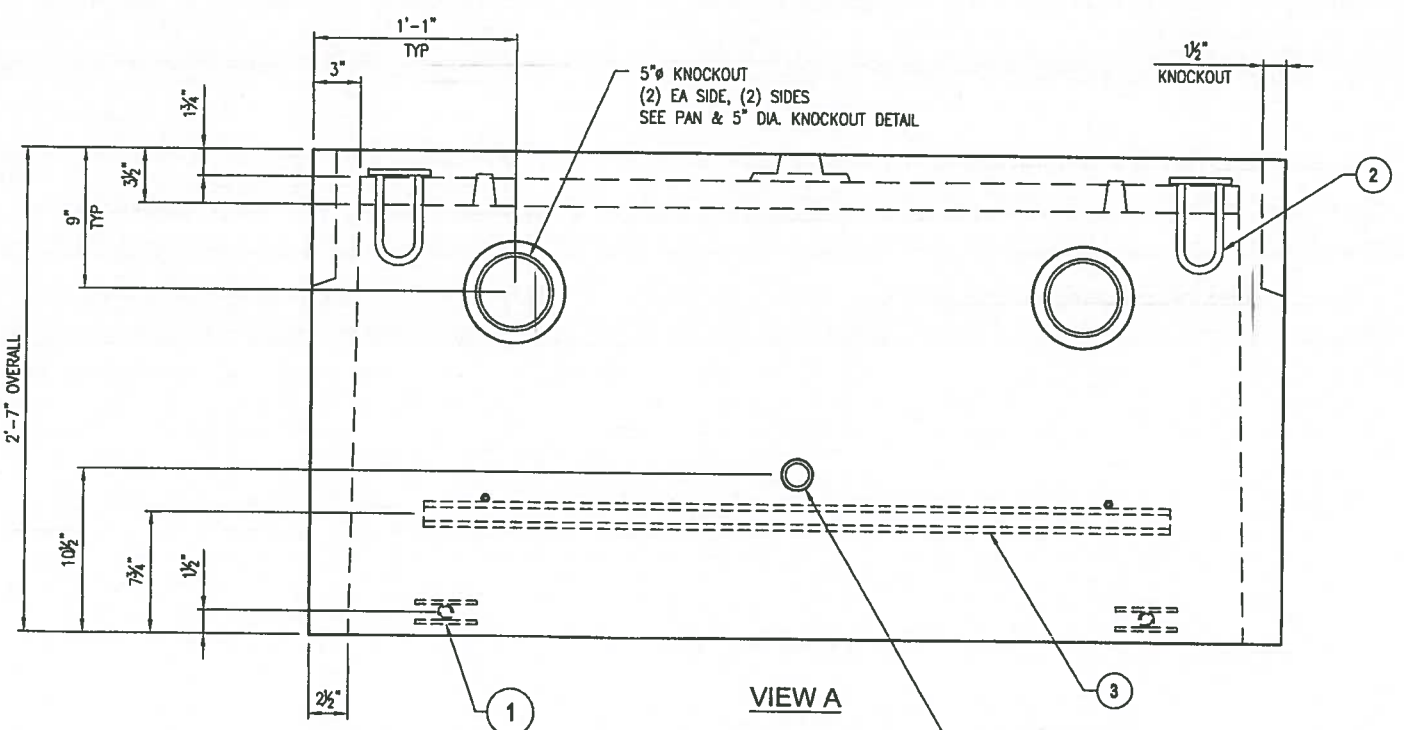
SHOP NOTES

- USE "25-TA" STEEL FORM MODIFIED AS SHOWN
- CONCRETE FINISH: FLAT FLOAT FINISH WITH 3/4" CHAMFERED EDGES
- FILL 3/8" NC COUPL'G NUT WITH GREASE TAPE ENDS PROTECTOR

**APPROVED**

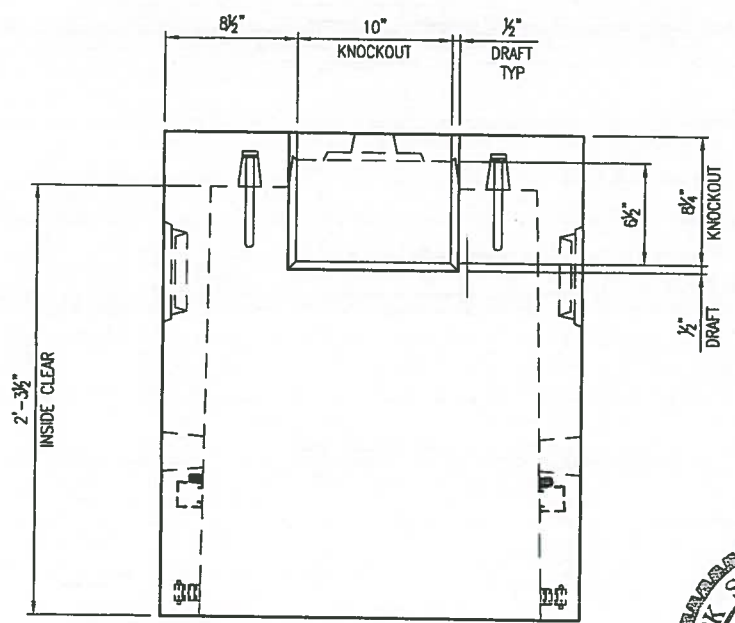
Washington State Department of Transportation  
 HQ Traffic Operations Office

BY: *[Signature]* DATE: 3/20/2018



VIEW A

1/2" LIFTING HOLE  
 (1) EA SIDE, (2) SIDES



VIEW B

| BILL OF MATERIALS |           |  |         |
|-------------------|-----------|--|---------|
| #                 | QUANTITY  | DESCRIPTION                            | ITEM #  |
| 1                 | 4 ea      | INSERT THIN SLAB FERR 3/4"             | 5100505 |
| 2                 | 4 ea      | 1/2" PULLING IRON - GALV               | 5180140 |
| 3                 | 2 ea      | 1 5/8" x 1 5/8" SS STRUT w/COUPL'G NUT | SHT 3   |
|                   | 0.37 yds  | CONCRETE MIX - SCC                     | 5010000 |
|                   | 1.48 bar  | REBAR #3 X 40' A706/GR60               | 5510010 |
|                   | 47.09 sqf | MESH - (SQUARE FEET)                   | 5500000 |

STATE INSPECTION  
 REQUIRED



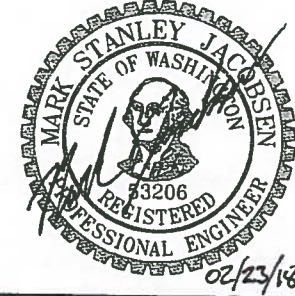
THIS DOCUMENT IS THE PROPERTY OF OLDCASTLE PRECAST, INC. IT IS CONFIDENTIAL, SUBMITTED FOR REFERENCE PURPOSES ONLY, AND SHALL NOT BE USED IN ANY WAY INJURIOUS TO THE INTERESTS OF, OR WITHOUT THE WRITTEN PERMISSION OF OLDCASTLE PRECAST, INC. COPYRIGHT © 2014 OLDCASTLE PRECAST, INC. ALL RIGHTS RESERVED.

SMALL CABLE VAULT - WSDOT  
 25-TA WSDOT: LAYOUT DETAILS

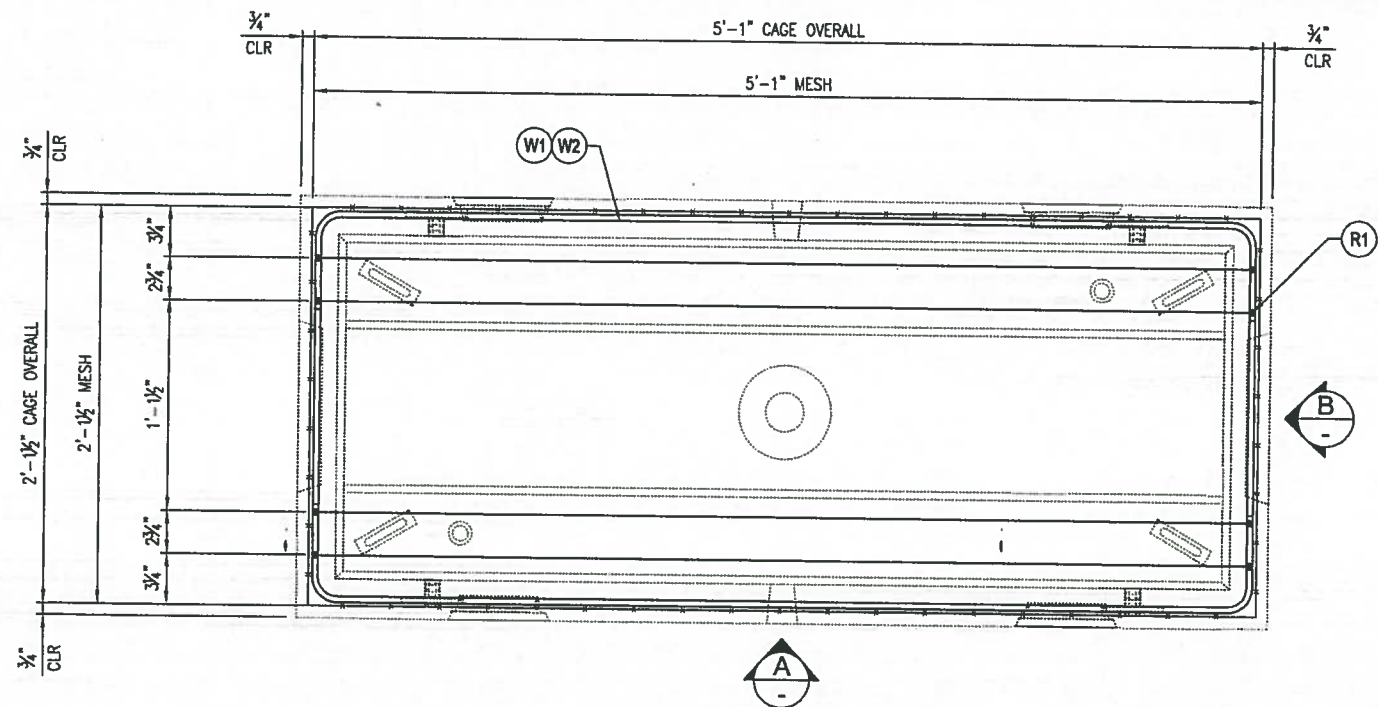
STANDARD PRODUCT

CUSTOMER  
 WSDOT

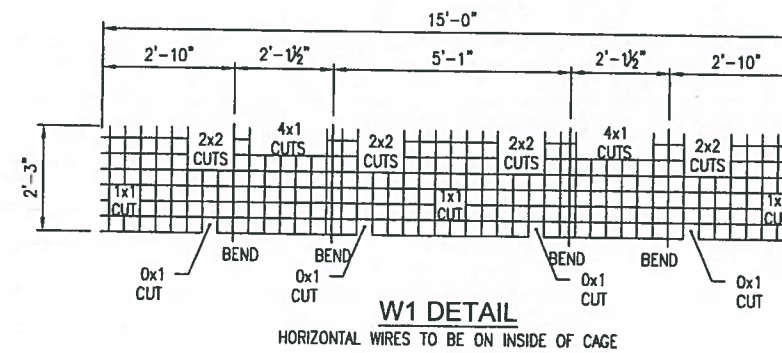
| DATE            | SALES | DRAWN                   | ENGINEER | CHECKED | SALES ORDER |
|-----------------|-------|-------------------------|----------|---------|-------------|
| 10/04/17        |       | CJC                     |          |         |             |
| DRAWING NUMBER  |       | REVISION                |          | SHEET   |             |
| 010-0020395-001 |       | C<br>REV DATE 2/20/2018 |          | 1 OF 3  |             |



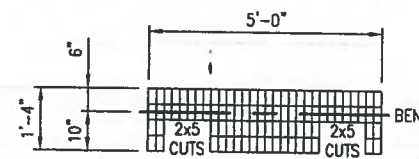
| REVISION | DESCRIPTION                            | BY  |
|----------|--|-----|
| C        | UPDATED SHEET NUMBER IN BOM FOR PART 3 | CJC |



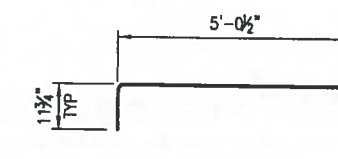
PLAN VIEW  
REINFORCING (SHOWN AS POURED)



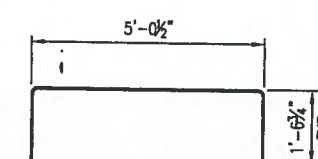
W1 DETAIL  
HORIZONTAL WIRES TO BE ON INSIDE OF CAGE



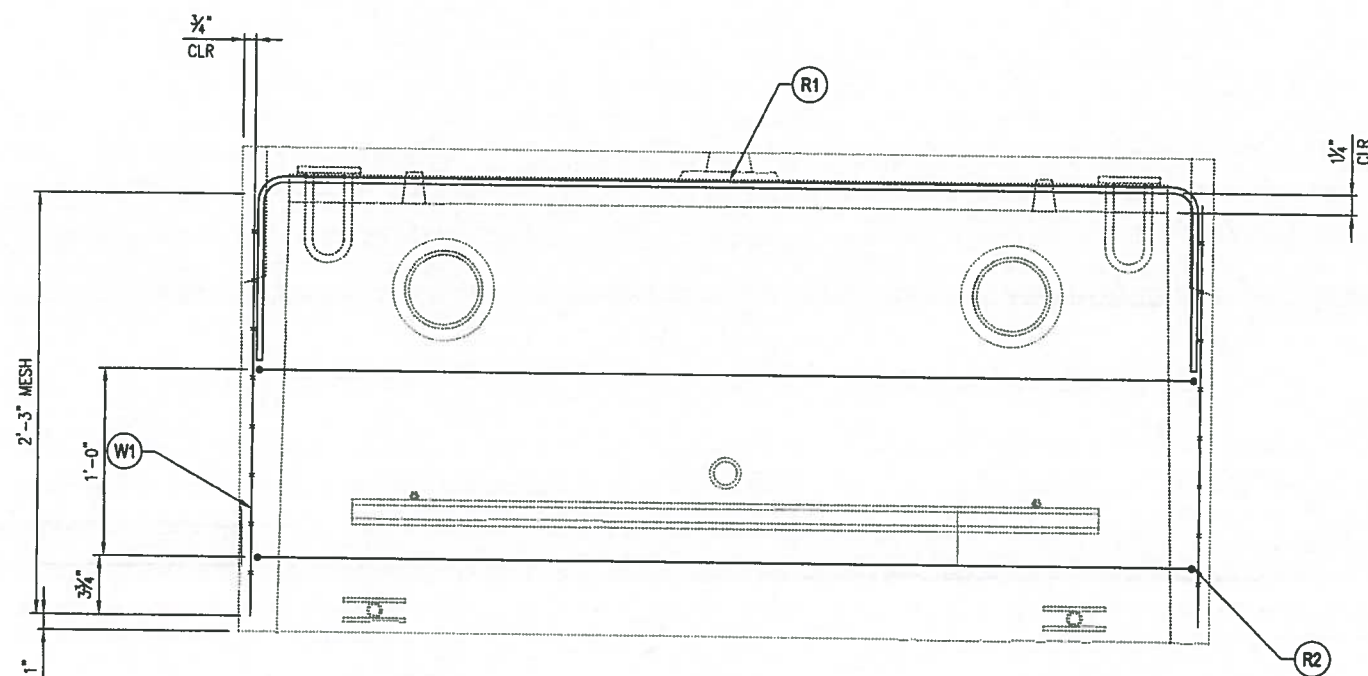
W2 DETAIL



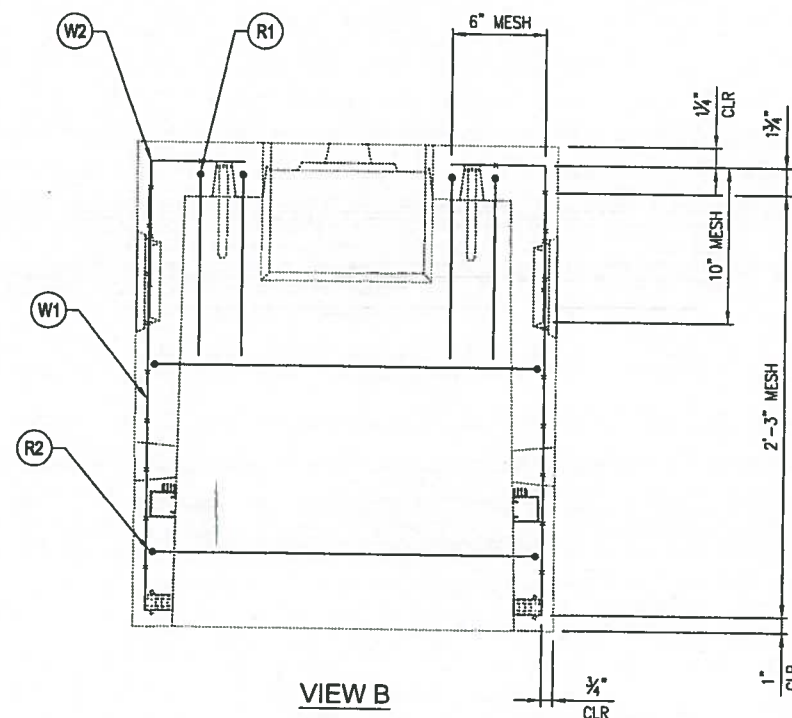
R1 DETAIL



R2 DETAIL



VIEW A



VIEW B

| REINFORCEMENT CUT LIST |     |                        |        |       |
|------------------------|-----|------------------------|--------|-------|
| #                      | QTY | MATERIAL               | LENGTH | SHAPE |
| R1                     | 4   | #3 REBAR A706/GR60     | 6'-10" | BENT  |
| R2                     | 4   | #3 REBAR A706/GR60     | 8'-0"  | BENT  |
| W1                     | 1   | MESH 4X4 - W2.9 X W2.9 |        | BENT  |
| W2                     | 2   | MESH 4X2 - W2.9 X W2.9 |        | BENT  |

STATE INSPECTION  
REQUIRED



THIS DOCUMENT IS THE PROPERTY OF OLDCASTLE PRECAST, INC. IT IS CONFIDENTIAL, SUBMITTED FOR REFERENCE PURPOSES ONLY, AND SHALL NOT BE USED IN ANY WAY INJURIOUS TO THE INTERESTS OF, OR WITHOUT THE WRITTEN PERMISSION OF OLDCASTLE PRECAST, INC. COPYRIGHT © 2014 OLDCASTLE PRECAST, INC. ALL RIGHTS RESERVED.

SMALL CABLE VAULT - WSDOT  
25-TA WSDOT: REINFORCING LAYOUT

STANDARD PRODUCT

CUSTOMER  
WSDOT

| DATE     | SALES     | DRAWN  | ENGINEER | CHECKED | SALES ORDER |
|----------|-----------|--------|----------|---------|-------------|
| 10/04/17 |           | CJC    |          |         |             |
| REVISION | REV DATE  | SHEET  |          |         |             |
| E        | 2/20/2018 | 2 OF 3 |          |         |             |



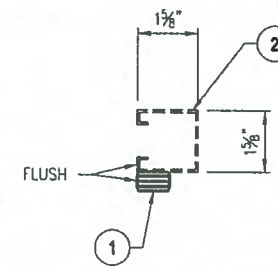
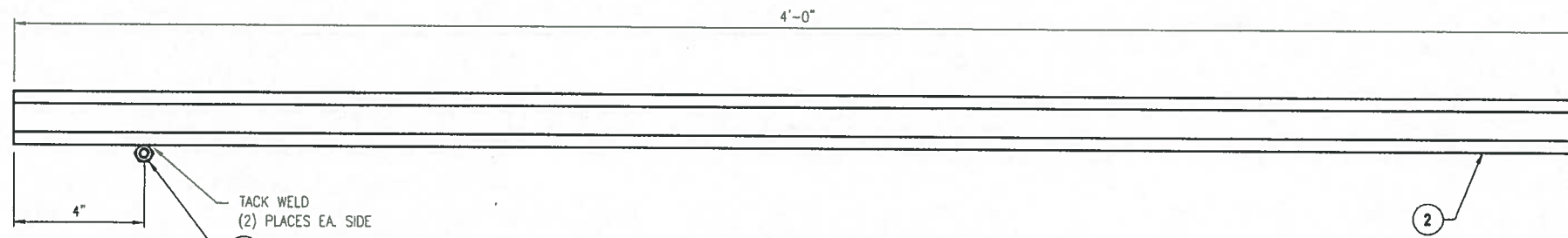
02/23/18

**APPROVED**

Washington State Department of Transportation  
HQ Traffic Operations Office

BY: *[Signature]* DATE: 3/20/2018

| REVISION | DESCRIPTION              | BY  |
|----------|--------------------------|-----|
| E        | NO CHANGES TO THIS SHEET | CJC |



**1 5/8"x 1 5/8" SS STRUT w/COUPLING NUT**  
(2) ASSEMBLIES REQUIRED

| LAYOUT CUT LIST |          |                            |       |
|-----------------|----------|----------------------------|-------|
| #               | QUANTITY | DESCRIPTION                | SIZE  |
| 2               | 2 ea     | STRUT 1 5/8" x 1 5/8" - SS | 4'-0" |

| BILL OF MATERIALS |          |                                      |         |
|-------------------|----------|--------------------------------------|---------|
| #                 | QUANTITY | DESCRIPTION                          | ITEM #  |
| 1                 | 2 ea     | 5/16" NC x 7/8" LG COUPLING NUT - SS | 5700045 |
|                   | 8 ft     | STRUT 1 5/8" x 1 5/8" 304 SS         | 5110025 |

**STATE INSPECTION  
REQUIRED**

**APPROVED**  
Washington State Department of Transportation  
HQ Traffic Operations Office  
BY: [Signature] DATE: 3/20/2018



**Oldcastle Precast®**  
P.O. BOX 588 ALBUQUERQUE, NM 87101-0588  
PHONE: 800-802-1538 FAX: 203-795-4201

THIS DOCUMENT IS THE PROPERTY OF OLDCASTLE PRECAST, INC. IT IS CONFIDENTIAL, SUBMITTED FOR REFERENCE PURPOSES ONLY, AND SHALL NOT BE USED IN ANY WAY INJURIOUS TO THE INTERESTS OF, OR WITHOUT THE WRITTEN PERMISSION OF OLDCASTLE PRECAST, INC. COPYRIGHT © 2014 OLDCASTLE PRECAST, INC. ALL RIGHTS RESERVED.

**SMALL CABLE VAULT - WSDOT**  
PARTS DETAILS

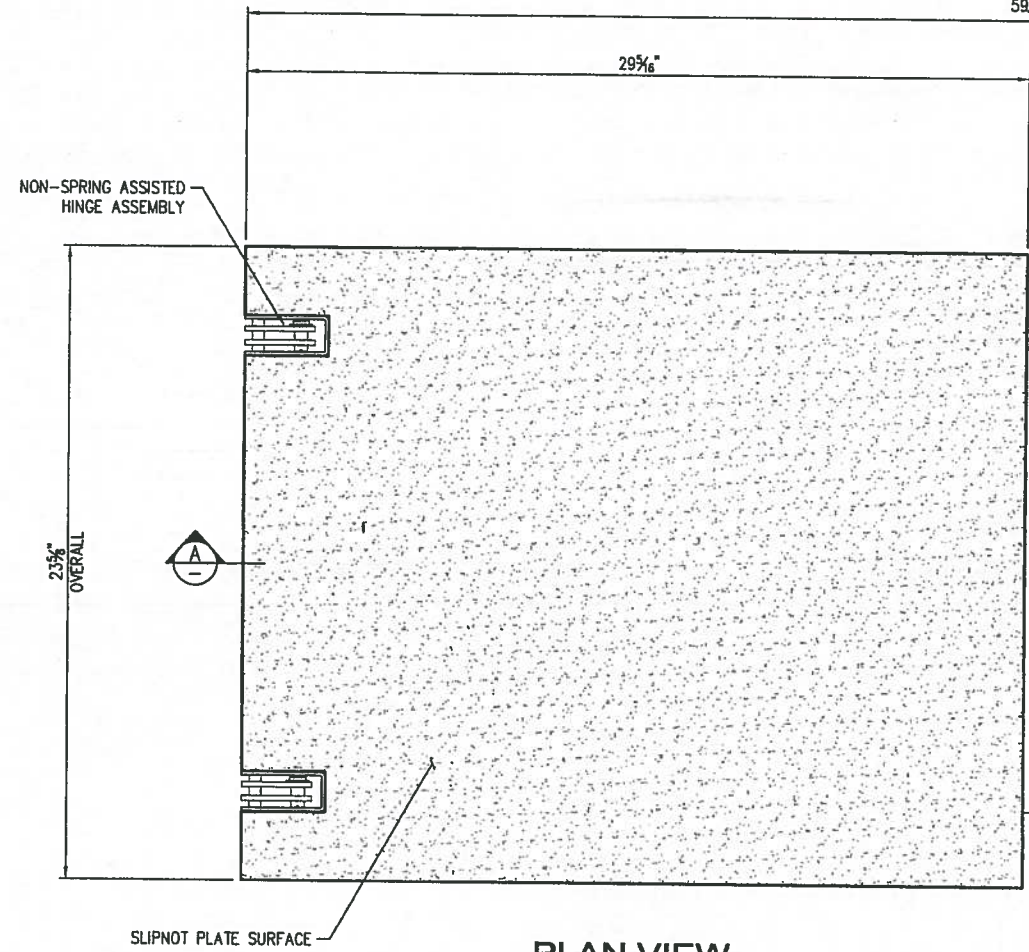
STANDARD PRODUCT

CUSTOMER  
**WSDOT**

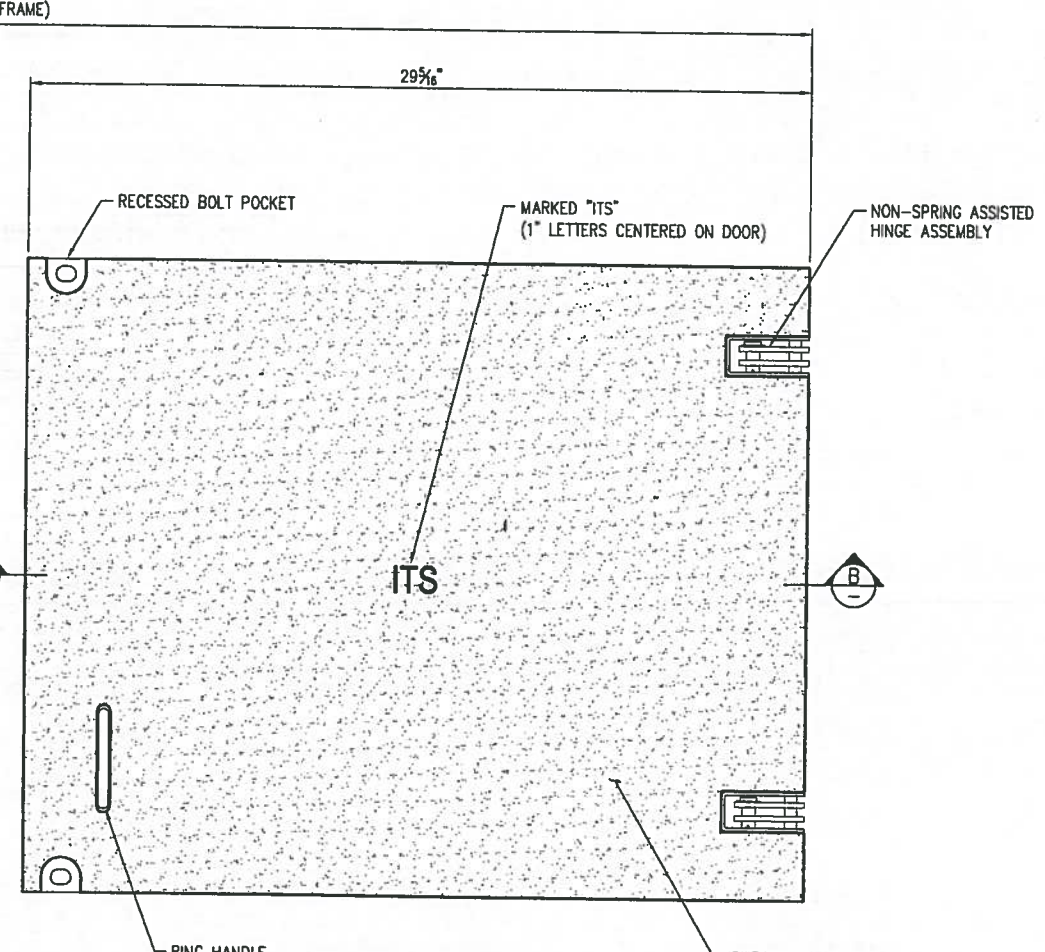
|  |       |              |  |                        |             |
|--|-------|--------------|--|------------------------|-------------|
| DATE<br>10/04/17                         | SALES | DRAWN<br>CJC | ENGINEER                               | CHECKED                | SALES ORDER |
| DRAWING NUMBER<br><b>010-0020395-001</b> |       |              | REVISION<br>D<br>REV DATE<br>2/20/2018 | SHEET<br><b>3 OF 3</b> |             |

|          |                          |     |
|----------|--------------------------|-----|
| D        | NO CHANGES TO THIS SHEET | CJC |
| REVISION | DESCRIPTION              | BY  |

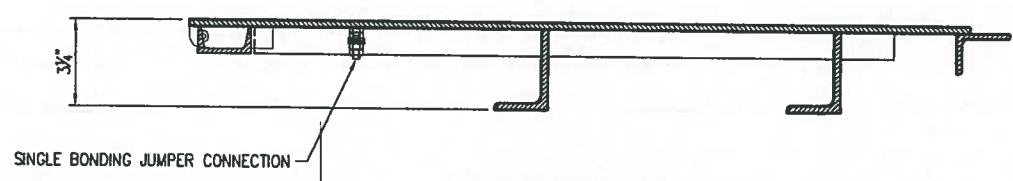
59 1/8" OVERALL (WHEN ASSEMBLED IN FRAME)



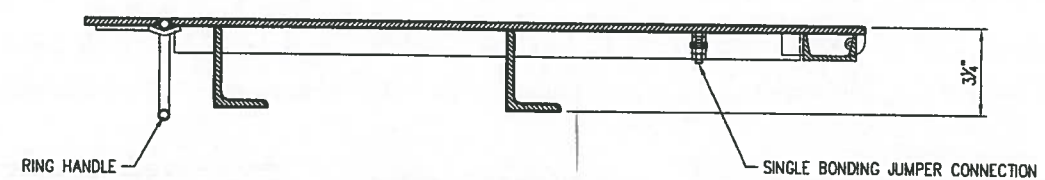
**PLAN VIEW**  
"MALE" DOOR



**PLAN VIEW**  
"FEMALE" DOOR



**SECTION AA**  
"MALE" DOOR



**SECTION BB**  
"FEMALE" DOOR

**STRUCTURAL NOTES**

1. MATERIAL: ASTM A36 STRUCTURAL STEEL STANDARDS
2. ASSEMBLY: AWS D1.1 WELDING STANDARDS
3. COATING: ASTM A123 HOT-DIP GALVANIZING STANDARDS

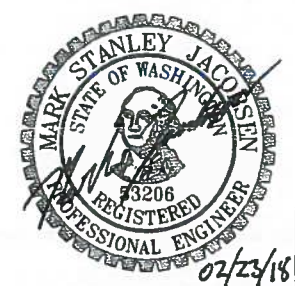
**GENERAL NOTES**

1. FRAMES AVAILABLE TO USE WITH THIS DOOR:  
2180065 (38/25-NSA-BT FRAME - WSDOT)
2. 2 TYPE OF DOOR SETS  
(2) MARKED "ITS"

**ENGINEERS SEAL:**

DOOR SHOP DRAWINGS REVIEWED FOR GENERAL CONFORMANCE TO THE INTENT OF WSDOT STANDARD PLAN J-90.21-01 ONLY. DOOR AND FRAME TO BE TESTED IN ACCORDANCE TO SECTION 9-29.2(5) OF THE WSDOT STANDARD SPECIFICATION TO ENSURE STRUCTURAL SUITABILITY.

STATE INSPECTION  
REQUIRED



**APPROVED**

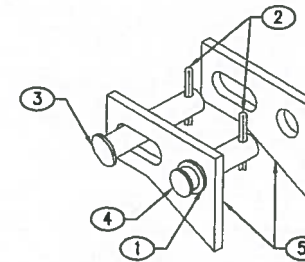
Washington State Department of Transportation  
HQ Traffic Operations Office

BY: *[Signature]* DATE: 3/20/2018

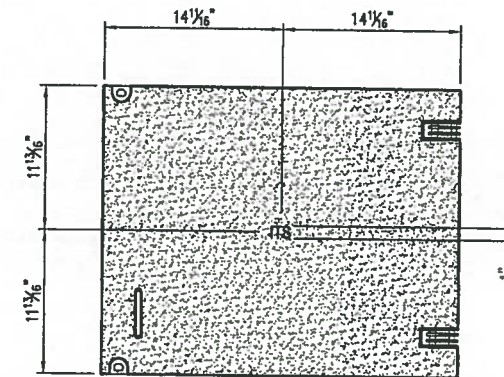
|     |                        |           |     |  |       |         |          |  |   |                |                 |          |        |
|-----|------------------------|-----------|-----|--|-------|---------|----------|--|---|----------------|-----------------|----------|--------|
| C   | CHANGED DRAWING NUMBER | 2/20/2018 | CJC | THIS DOCUMENT IS THE PROPERTY OF OLDCASTLE PRECAST, INC. IT IS SUBMITTED FOR REFERENCE PURPOSES ONLY AND SHALL NOT BE USED IN ANY WAY UNLESS TO THE INTERESTS OF SAID COMPANY. COPYRIGHT © 2010 Oldcastle Precast, Inc. All Rights Reserved. | SALES | DATE    | 10/03/17 | <p><b>Oldcastle Precast®</b><br/>P.O. BOX 588 ALBUQUERQUE, NM 87071-0588<br/>PHONE: 800-892-1538 FAX: 253-735-4201</p> | 38/25-NS-NSA-SET "ITS" - WSDOT<br>DOOR LAYOUT DETAILS<br>STANDARD PRODUCT | CUSTOMER       | WSDOT           | SHEET    | 1 of 4 |
| LTR | REVISION               | DATE      | BY  | DESIGNER   | CJC   | WEIGHT  | 160 lbs  |  |   | DRAWING NUMBER | 010-2180050-001 | REVISION | C      |
|     |                        |           |     | CHECKED  |       | CALC NO |          |  |   |                |                 |          |        |

QUANTITIES ARE FOR A COMPLETE 38/25-NS-NSA-SET

| BILL OF MATERIAL |        |     |    |                                      |                 |
|------------------|--------|-----|----|--------------------------------------|-----------------|
| ASTM SPEC        | PART   | QTY | UM | DESCRIPTION                          | ITEM #          |
| A682             | 1      | 4   | ea | 7/8" OD FLAT WASHER - SS - OPC       | 010-9820123-000 |
| A682             | 2      | 8   | ea | 5/32" x 1" COTTER PIN - SS - OPC     | 010-9820122-000 |
| B221             | 3      | 4   | ea | 7/16" x 2 1/4" HINGE PIN - SS        | 010-5182015-000 |
| B221             | 4      | 4   | ea | 1/2" x 1" HINGE PIN - SS             | 010-5182010-000 |
| A304             | 5      | 8   | ea | Hinge Side - SS                      | 010-5310010-001 |
| A1011 SS         | 6      | 4   | ea | Hinge Pocket                         | 010-5310040-001 |
| F593             | 7      | 2   | ea | 1/4"-20 NC x 1" 304 SCREW - SS       | 010-5182029-000 |
| A108             | 8      | 1   | ea | Ring Handle                          | 010-5210090-001 |
| A36              | 16     | 1   | ea | Clip                                 | 010-5210100-001 |
| A307             | 17     | 2   | ea | 1/2" x 1" Hex Head Screw - Plated    | OPC             |
| A307             | 18     | 2   | ea | 1/2" Spring Nut - Plated - Not Stock | 010-5910300-000 |
| A194             | 19     | 6   | ea | 1/4"- 20 304 Finish Hex Nut - SS     | 010-5182027-000 |
| A204             | 20     | 8   | ea | 1/4" 18-8 Flat Washer - SS           | 010-5182028-000 |
| A786             | 1      | ea  | ea | Slipnot Plate 1/4" - 38/25 NSA Set   | 010-5540254-000 |
| A36              | 25.96  | lbs |    | Angle 2" x 3" x 1/4"                 | 010-5510220-000 |
| A36              | 3.18   | lbs |    | Angle 1-1/2" x 2" x 3/16"            | 010-5510215-000 |
| A36              | 18.10  | lbs |    | Channel 2" x 1" x 1/8"               | 010-5520230-000 |
| A36              | .32    | lbs |    | Flatbar 3/16" x 1-1/2"               | 010-5520050-000 |
| A123             | 163.00 | lbs |    | Galvanizing Per LB-for SlipNot       | 010-5800010-000 |



**HINGE ASSEMBLY**  
(SHOWN, BUT NOT INSTALLED UNTIL DOOR & FRAME ASSEMBLED)



**LETTERING DETAIL**

**ENGINEERS SEAL:**

DOOR SHOP DRAWINGS REVIEWED FOR GENERAL CONFORMANCE TO THE INTENT OF WSDOT STANDARD PLAN J-90.21-01 ONLY. DOOR AND FRAME TO BE TESTED IN ACCORDANCE TO SECTION 9-29.2(5) OF THE WSDOT STANDARD SPECIFICATION TO ENSURE STRUCTURAL SUITABILITY.

**APPROVED**

Washington State Department of Transportation  
HQ Traffic Operations Office

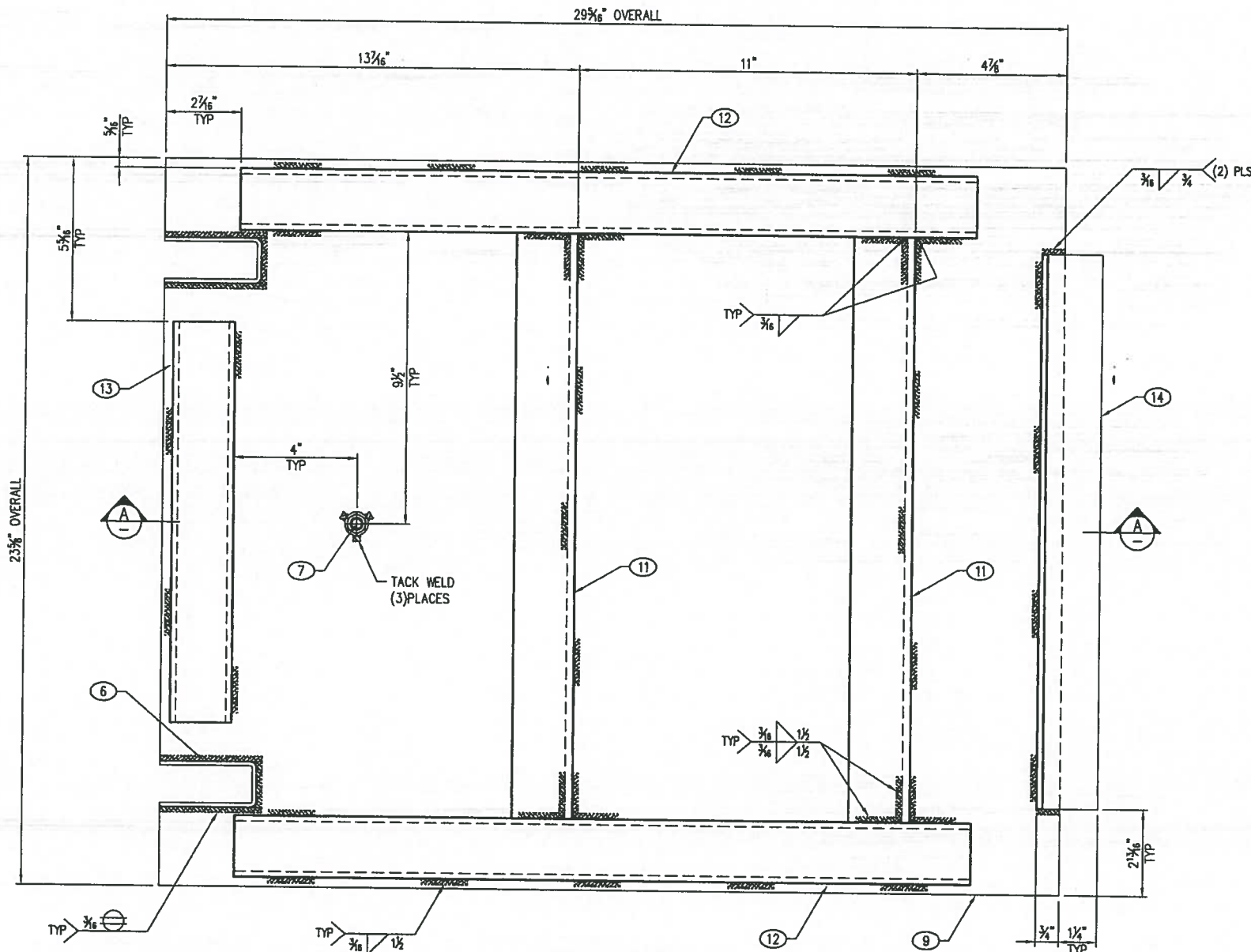
BY: [Signature] DATE: 3/20/2018

STATE INSPECTION  
REQUIRED

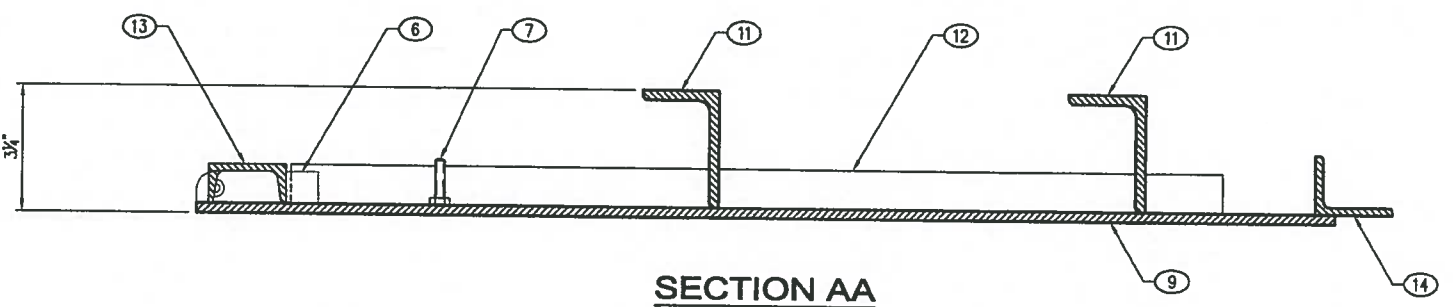


02/23/18

|     |   |           |     |          |      |          |   |   |                |                 |          |        |
|-----|---|-----------|-----|----------|------|----------|---|---|----------------|-----------------|----------|--------|
| C   | ADDED HINGE ASSEMBLY & LETTERING DETAIL DETAILS | 2/20/2018 | CJC | SALES    | DATE | 10/03/17 | <p><b>Oldcastle Precast®</b><br/>P.O. BOX 588 AUBURN, WA 98071-0588<br/>PHONE: 800-882-1538 FAX: 253-735-4201</p> | 38/25-NS-NSA-SET "ITS" - WSDOT<br>BILL OF MATERIALS<br>STANDARD PRODUCT | CUSTOMER       | WSDOT           | SHEET    | 2 of 4 |
| LTR | REVISION  | DATE      | BY  | DESIGNER | CJC  | WEIGHT   |   |   | DRAWING NUMBER | 010-2180050-001 | REVISION | C      |
|     |   |           |     | CHECKED  |      | CALC NO  |   |   |                |                 |          |        |



**PLAN VIEW**  
(UNDERSIDE OF DOOR SHOWN)



**SECTION AA**

QUANTITIES FOR 'MALE' DOOR ONLY; SEE SHEET 2  
FOR COMPLETE BILL OF MATERIALS

| BILL OF MATERIAL |      |       |     |                                    |                 |
|------------------|------|-------|-----|------------------------------------|-----------------|
| ASTM SPEC        | PART | QTY   | U/M | DESCRIPTION                        | ITEM #          |
| A1011 SS         | 6    | 2     | ea  | Hinge Pocket                       | 010-5310040-001 |
| F593             | 7    | 1     | ea  | 1/4"-20 NC x 1" 304 SCREW - SS     | 010-5182029-000 |
| A786             | 9    | 0.50  | slt | Slipnot Plate 1/4" - 38/25 NSA Set | 010-5540254-000 |
| A36              |      | 12.98 | lbs | Angle 2" x 3" x 1/4"               | 010-5510220-000 |
| A36              |      | 3.18  | lbs | Angle 1-1/2" x 2" x 3/16"          | 010-5510215-000 |
| A36              |      | 9.05  | lbs | Channel 2" x 1" x 1/8"             | 010-5520230-000 |
| A123             |      | 80.00 | lbs | Galvanizing Per LB-for SlipNot     | 010-5800010-000 |

| LAYOUT CUT LIST |     |                           |      |
|-----------------|-----|---------------------------|------|
| PART            | QTY | DESCRIPTION               | SIZE |
| 11              | 2   | Angle 2" x 3" x 1/4"      | 19"  |
| 12              | 2   | Channel 2" x 1" x 1/8"    | 24"  |
| 13              | 1   | Channel 2" x 1" x 1/8"    | 13"  |
| 14              | 1   | Angle 1-1/2" x 2" x 3/16" | 18"  |

**SHOP NOTES**

- OVERALL DIMENSIONS HAVE A MAXIMUM ALLOWABLE TOLERANCE OF  $\pm 1/16"$
- ALL WELDS ARE  $3/16"$  FILLET WELDS, UNLESS OTHERWISE NOTED
- GRIND ALL SHARP EDGES
- DOOR TO BE HOT-DIPPED GALVANIZED AFTER FABRICATION.

**ENGINEERS SEAL:**

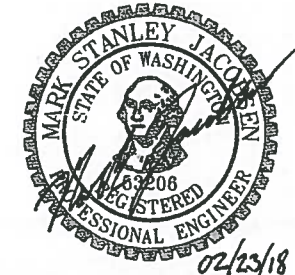
DOOR SHOP DRAWINGS REVIEWED FOR GENERAL CONFORMANCE TO THE INTENT OF WSDOT STANDARD PLAN J-90.21-01 ONLY. DOOR AND FRAME TO BE TESTED IN ACCORDANCE TO SECTION 9-29.2(5) OF THE WSDOT STANDARD SPECIFICATION TO ENSURE STRUCTURAL SUITABILITY.

**APPROVED**

Washington State Department of Transportation  
HQ Traffic Operations Office

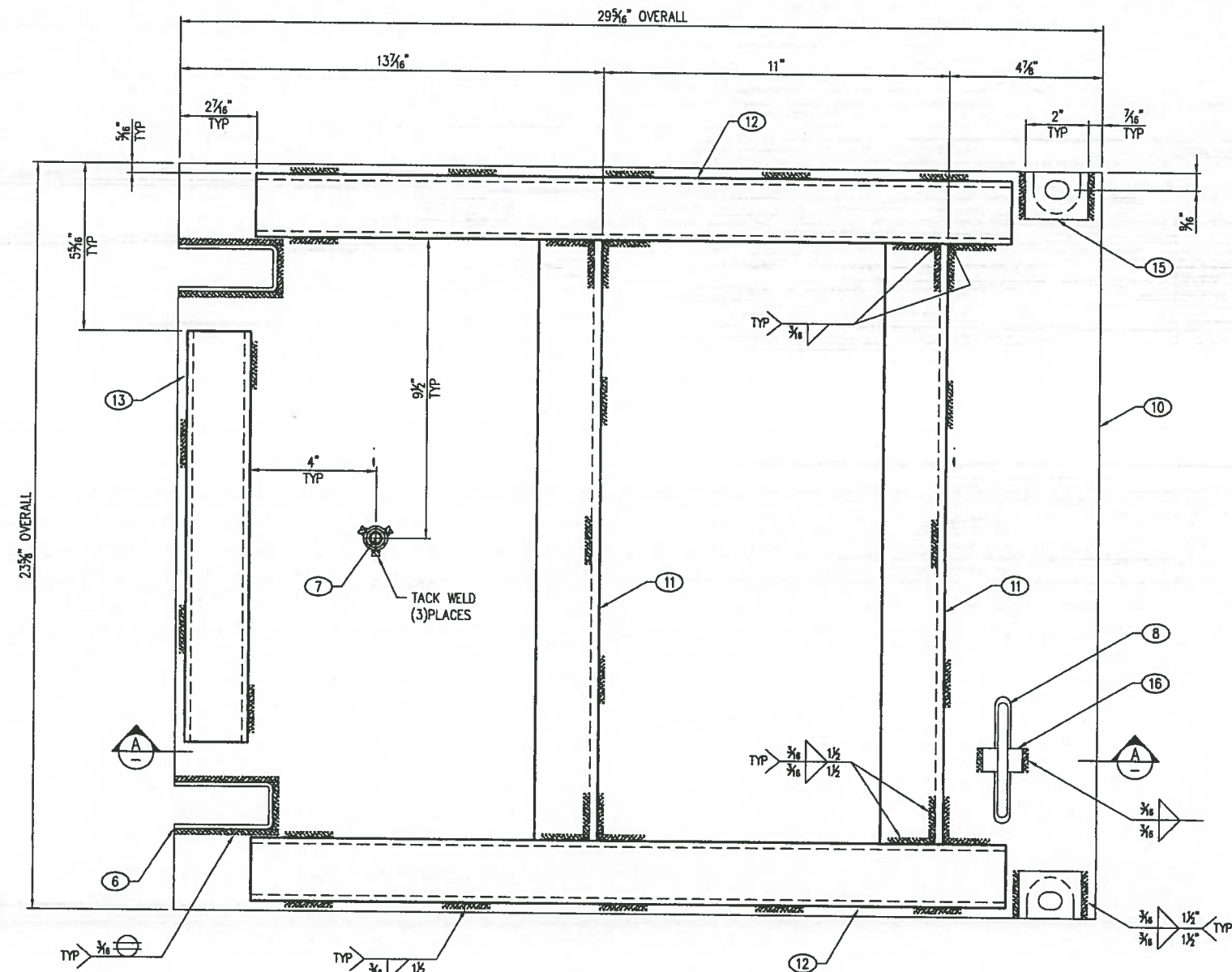
BY: *[Signature]* DATE: 3/20/2018

STATE INSPECTION  
REQUIRED



|      |  |           |     |  |          |      |          |                                |                          |                |                 |          |   |
|------|--|-----------|-----|--|----------|------|----------|--------------------------------|--------------------------|----------------|-----------------|----------|---|
| C    | REMOVED PARTS 1-5 FROM BOM, MOVED DETAILS TO SHEET 2 | 2/21/2018 | CJC | THIS DOCUMENT IS THE PROPERTY OF Oldcastle PRECAST, INC. IT IS SUBMITTED FOR REFERENCE PURPOSES ONLY AND SHALL NOT BE USED IN ANY WAY UNLESS TO THE INTERESTS OF SAID COMPANY. COPYRIGHT © 2010 Oldcastle Precast, Inc. All Rights Reserved. | SALES    | DATE | 10/03/17 | 38/25-NS-NSA-SET "ITS" - WSDOT | CUSTOMER                 | WSDOT          | SHEET           | 3 of 4   |   |
| LTR. | REVISION   | DATE      | BY  |  | DESIGNER | CJC  | WEIGHT   | 83 lbs                         | "MALE" DOOR WELD DETAILS | DRAWING NUMBER | 010-2180050-001 | REVISION | C |
|      |  |           |     |  | CHECKED  |      | CALC NO  |                                | STANDARD PRODUCT         |                |                 |          |   |



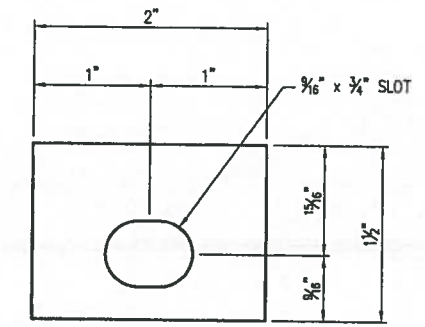


**PLAN VIEW**  
(UNDERSIDE OF DOOR SHOWN)

QUANTITIES FOR 'FEMALE' DOOR ONLY; SEE SHEET 2  
FOR COMPLETE BILL OF MATERIALS

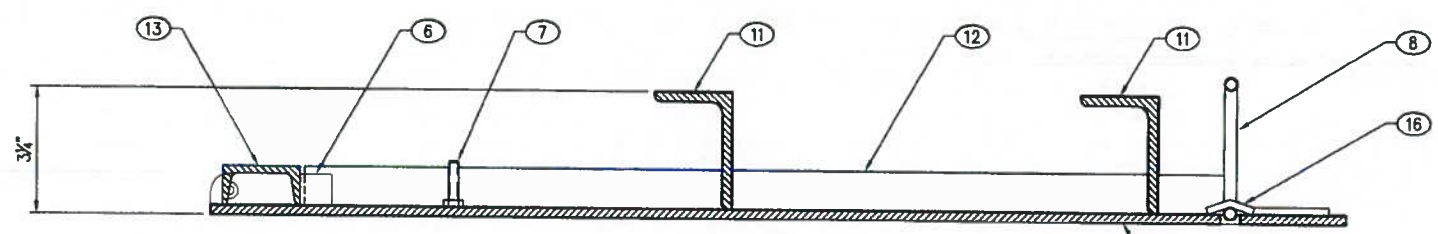
| BILL OF MATERIAL |      |       |     |                                      |                 |
|------------------|------|-------|-----|--------------------------------------|-----------------|
| ASTM SPEC        | PART | QTY   | UM  | DESCRIPTION                          | ITEM #          |
| A1011 SS         | 6    | 2     | ea  | Hinge Pocket                         | 010-5310040-001 |
| F593             | 7    | 1     | ea  | 1/4"-20 NC x 1" 304 SCREW - SS       | 010-5182029-000 |
| A108             | 8    | 1     | ea  | Ring Handle                          | 010-5210090-001 |
| A36              | 16   | 1     | ea  | Clip                                 | 010-5210100-001 |
| A307             | 17   | 2     | ea  | 1/2" x 1" Hex Head Screw - Plated    | OPC             |
| A307             | 18   | 2     | ea  | 1/2" Spring Nut - Plated - Not Stock | 010-5910300-000 |
| A786             | 10   | 0.50  | sht | Slipnot Plate 1/4" - 38/25 NSA Set   | 010-5540254-000 |
| A36              |      | 12.98 | lbs | Angle 2" x 3" x 1/4"                 | 010-5510220-000 |
| A36              |      | 9.05  | lbs | Channel 2" x 1" x 1/8"               | 010-5520230-000 |
| A36              |      | .32   | lbs | Flatbar 3/16" x 1-1/2"               | 010-5520050-000 |
| A123             |      | 80.00 | lbs | Galvanizing Per LB-for SlipNot       | 010-5800010-000 |

| LAYOUT CUT LIST |     |                        |      |
|-----------------|-----|------------------------|------|
| PART            | QTY | DESCRIPTION            | SIZE |
| 11              | 2   | Angle 2" x 3" x 1/4"   | 19"  |
| 12              | 2   | Channel 2" x 1" x 1/8" | 24"  |
| 13              | 1   | Channel 2" x 1" x 1/8" | 13"  |
| 15              | 2   | Flatbar 3/16" x 1-1/2" | 2"   |



**PART No. 15**

**APPROVED**  
Washington State Department of Transportation  
HQ Traffic Operations Office  
BY: *[Signature]* DATE: 3/20/2018



**SECTION AA**

STATE INSPECTION  
REQUIRED

**SHOP NOTES**

- OVERALL DIMENSIONS HAVE A MAXIMUM ALLOWABLE TOLERANCE OF  $\pm 1/16$ "
- ALL WELDS ARE  $3/16$ " FILLET WELDS, UNLESS OTHERWISE NOTED
- GRIND ALL SHARP EDGES
- DOOR TO BE HOT-DIPPED GALVANIZED AFTER FABRICATION.

**ENGINEERS SEAL:**

DOOR SHOP DRAWINGS REVIEWED FOR GENERAL CONFORMANCE TO THE INTENT OF WSDOT STANDARD PLAN J-90.21-01 ONLY. DOOR AND FRAME TO BE TESTED IN ACCORDANCE TO SECTION 9-29.2(5) OF THE WSDOT STANDARD SPECIFICATION TO ENSURE STRUCTURAL SUITABILITY.

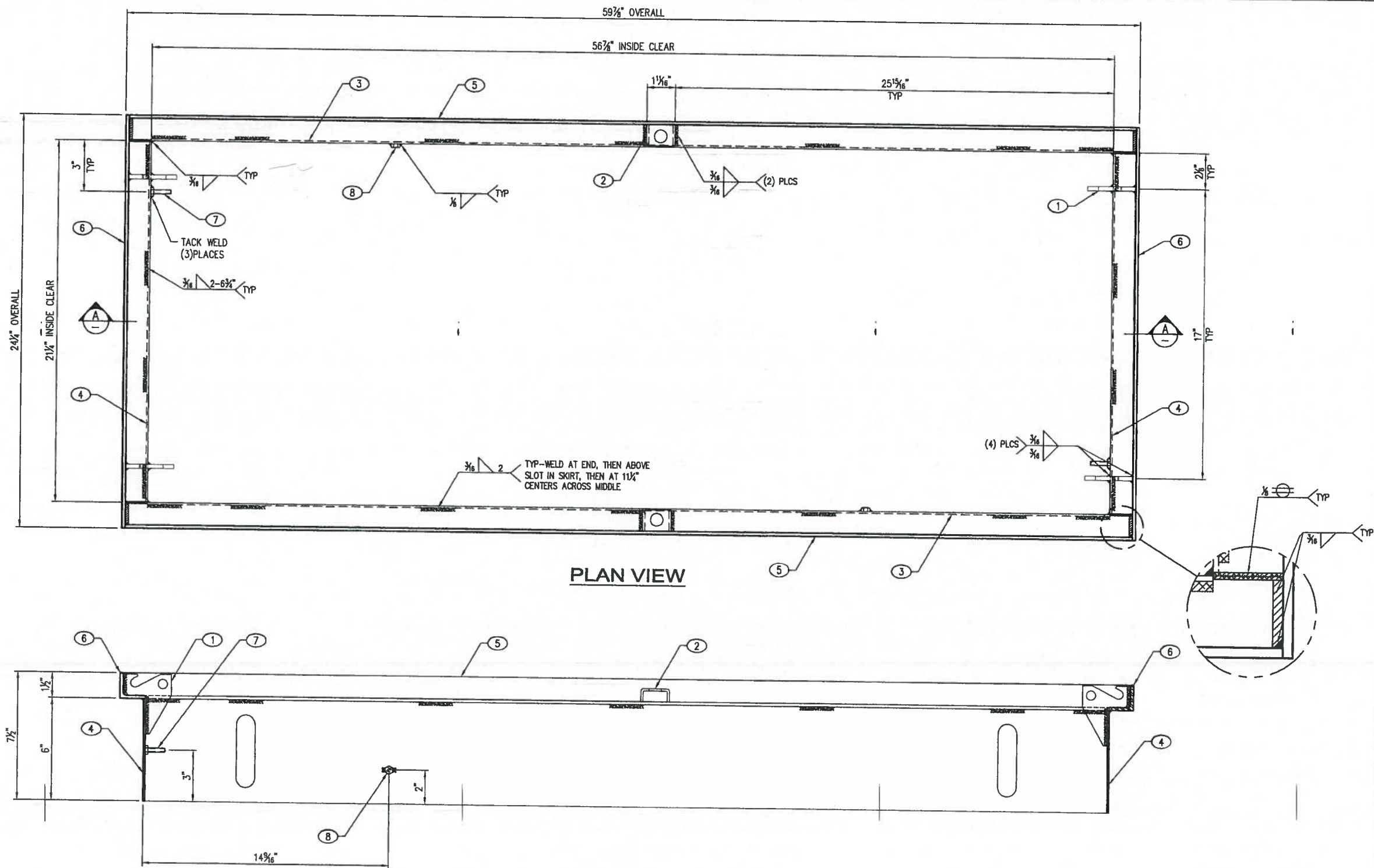


|      |  |           |     |   |          |      |          |                                |                |                 |          |        |
|------|--|-----------|-----|---|----------|------|----------|--------------------------------|----------------|-----------------|----------|--------|
| C    | REMOVED PARTS 1-5 FROM BOM, MOVED DETAILS TO SHEET 2 | 2/21/2018 | CJC | THIS DOCUMENT IS THE PROPERTY OF Oldcastle PRECAST, INC. IT IS SUBMITTED FOR REFERENCE PURPOSES ONLY AND SHALL NOT BE USED IN ANY WAY HARMFUL TO THE INTERESTS OF SAID COMPANY. COPYRIGHT © 2010 Oldcastle Precast, Inc. All Rights Reserved. | SALES    | DATE | 10/03/17 | 38/25-NS-NSA-SET "ITS" - WSDOT | CUSTOMER       | WSDOT           | SHEET    | 4 OF 4 |
| LTR. | REVISION   | DATE      | BY  |   | DESIGNER | CJC  | WEIGHT   | 80 lbs                         | DRAWING NUMBER | 010-2180050-001 | REVISION | C      |
|      |  |           |     |   | CHECKED  |      | CALC NO  |                                |                |                 |          |        |









**SHOP NOTES**

- OVERALL DIMENSIONS HAVE A MAXIMUM ALLOWABLE TOLERANCE OF  $\pm 1/16$ "
- ALL WELDS ARE  $3/16$ " FILLET WELDS, UNLESS OTHERWISE NOTED
- GRIND ALL SHARP EDGES
- FRAME TO BE HOT-DIPPED GALVANIZED AFTER FABRICATION.

**APPROVED**

Washington State Department of Transportation  
 HQ Traffic Operations Office

BY: *[Signature]* DATE: 3/20/2018

| BILL OF MATERIAL |      |       |     |                                   |                 |
|------------------|------|-------|-----|-----------------------------------|-----------------|
| ASTM SPEC        | PART | QTY   | U/M | DESCRIPTION                       | ITEM #          |
| A36              | 1    | 4     | ea  | Hinge Plate w/Cusset              | 010-5310020-001 |
| A1011            | 2    | 2     | ea  | Bolt Pocket                       | 010-5310130-001 |
| A1011            | 3    | 2     | ea  | 38/25 Side Skirt                  | 010-5220470-001 |
| A1011            | 4    | 2     | ea  | 38/25 End Skirt                   | 010-5220480-001 |
| A36              |      | 25.13 | lbs | Angle 1-1/2" x 1-1/2" x 3/16"     | 010-5510210-000 |
| F593             | 7    | 2     | ea  | 1/4"-20 NC x 1" 304 SCREW - SS    | 010-5182029-000 |
| A204             | 8    | 2     | ea  | 1/4" - 20 304 Finish Hex Nut - SS | 010-5182027-000 |
| A123             |      | 71    | lbs | Galvanizing Per Lb.               | 010-5800000-000 |

| LAYOUT CUT LIST |     |                               |         |
|-----------------|-----|-------------------------------|---------|
| PART            | QTY | DESCRIPTION                   | SIZE    |
| 5               | 2   | Angle 1-1/2" x 1-1/2" x 3/16" | 59 1/2" |
| 6               | 2   | Angle 1-1/2" x 1-1/2" x 3/16" | SHT 3   |

STATE INSPECTION  
REQUIRED



02/23/18

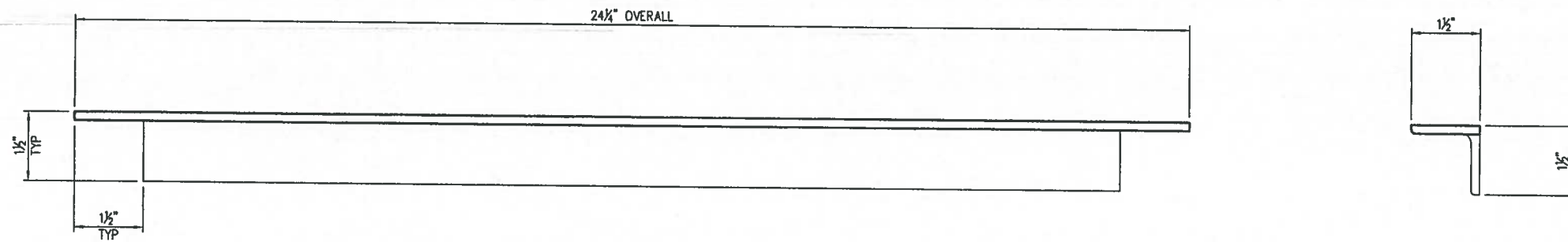
|     |                        |           |     |
|-----|------------------------|-----------|-----|
| C   | UPDATED BOM PART 8 QTY | 2/20/2018 | CJC |
| LTR | REVISION               | DATE      | BY  |

|          |      |          |
|----------|------|----------|
| SALES    | DATE | 10/03/17 |
| DESIGNER | CJC  | WEIGHT   |
| CHECKED  |      | CALC NO  |



38/25 NSA BT FRAME - WSDOT  
 WELD DETAILS  
 STANDARD PRODUCT

|                |                 |          |        |
|----------------|-----------------|----------|--------|
| CUSTOMER       | WSDOT           | SHEET    | 2 of 3 |
| DRAWING NUMBER | 010-2180065-001 | REVISION | C      |



**PART No. 6**

| LAYOUT CUT LIST |     |                               |         |
|-----------------|-----|-------------------------------|---------|
| PART            | QTY | DESCRIPTION                   | SIZE    |
| 6               | 2   | Angle 1-1/2" x 1-1/2" x 3/16" | 24 1/4" |

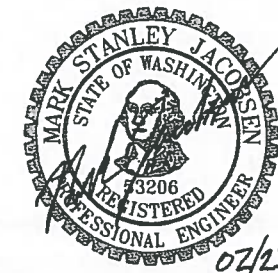
**APPROVED**

Washington State Department of Transportation

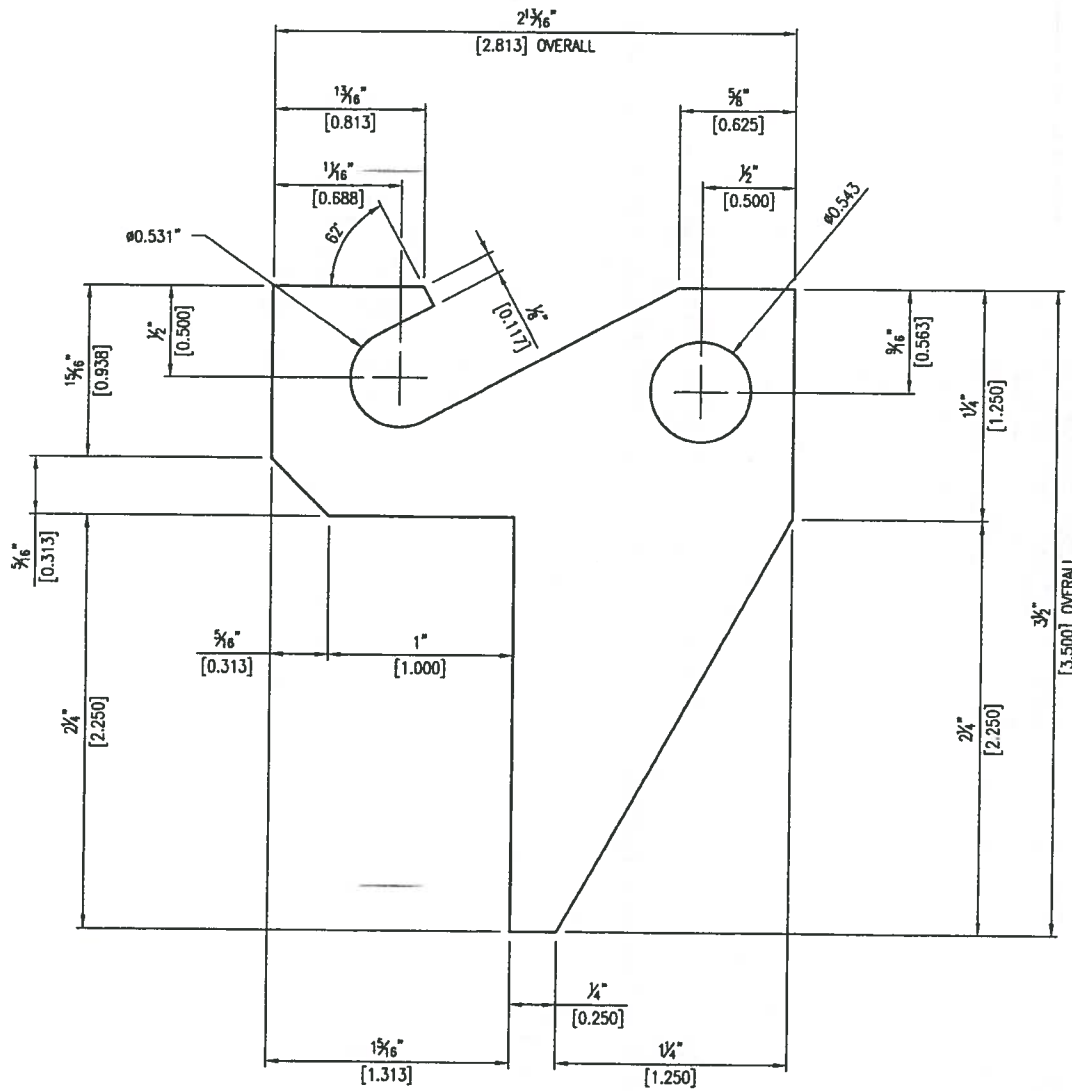
HQ Traffic Operations Office

BY: [Signature] DATE: 3/20/2018

STATE INSPECTION  
REQUIRED



|      |                          |           |     |   |         |                  |   |                            |                   |                 |
|------|--------------------------|-----------|-----|---|---------|------------------|---|----------------------------|-------------------|-----------------|
| A    | NO CHANGES TO THIS SHEET | 2/20/2018 | CJC | THIS DOCUMENT IS THE PROPERTY OF OLDCASTLE PRECAST, INC. IT IS LOANED TO YOU FOR REFERENCE PURPOSES ONLY AND SHALL NOT BE USED IN ANY WAY INJURIOUS TO THE INTERESTS OF SAID COMPANY. COPYRIGHT © 2010 Oldcastle Precast, Inc. All Rights Reserved. | SALES   | DATE 10/03/17    | <p><b>Oldcastle Precast®</b><br/>P.O. BOX 588 AUBURN, WA 98001-0588<br/>PHONE 800-892-1538 FAX 253-735-4201</p> | 38/25 NSA BT FRAME - WSDOT | CUSTOMER<br>WSDOT | SHEET<br>3 of 3 |
| LTR. | REVISION                 | DATE      | BY  | DESIGNER CJC  | WEIGHT  | PART DETAIL      |   | DRAWING NUMBER             | REVISION          |                 |
|      |                          |           |     | CHECKED   | CALC NO | STANDARD PRODUCT |   | 010-2180065-001            | A                 |                 |



PLAN VIEW

STRUCTURAL NOTES

1. MATERIAL: ASTM A1011 STRUCTURAL STEEL STANDARDS  
1/4" HOT ROLLED STEEL, GRADE 36
2. TOLERANCE: ± 0.030"
3. USED ON: 2-332-NSA, 38/25 BOLT-IN FRAME, & 264-TA FRAME
4. WEIGHT: 0.32 lbs

**APPROVED**

Washington State Department of Transportation  
HQ Traffic Operations Office

BY: *[Signature]* DATE: 3/20/2018



**Oldcastle Precast®**

P.O. BOX 688 ALBUQU, WA 98071-0288  
PHONE: 800-882-1830 FAX: 203-736-4201

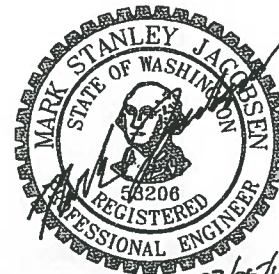
THIS DOCUMENT IS THE PROPERTY OF OLDCASTLE PRECAST, INC. IT IS CONFIDENTIAL, SUBMITTED FOR REFERENCE PURPOSES ONLY, AND SHALL NOT BE USED IN ANY WAY INJURIOUS TO THE INTERESTS OF, OR WITHOUT THE WRITTEN PERMISSION OF OLDCASTLE PRECAST, INC. COPYRIGHT © 2014 OLDCASTLE PRECAST, INC. ALL RIGHTS RESERVED.

**HINGE PLATE W/GUSSET - VENDOR SUPPLIED**  
DOMESTIC MATERIAL REQUIRED

STANDARD PRODUCT (A12-2772)

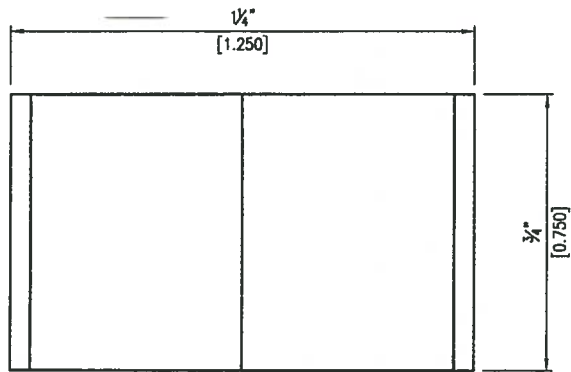
CUSTOMER

| DATE            | SALES | DRAWN | ENGINEER | CHECKED                   | SALES ORDER |
|-----------------|-------|-------|----------|---------------------------|-------------|
| 10/7/14         |       | MLF   |          |                           |             |
| DRAWING NUMBER  |       |       |          | REVISION                  | SHEET       |
| 010-5310020-001 |       |       |          | H<br>REV DATE<br>03/21/17 | 1 OF 1      |

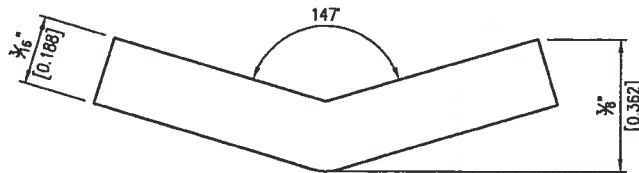


*03/20/18*

| H        | UPDATED TITLE BLOCK AND DIMENSIONS | CAS |
|----------|------------------------------------|-----|
| REVISION | DESCRIPTION                        | BY  |
|          |                                    |     |



PLAN VIEW



VIEW A

NOTES

1. MATERIAL: ASTM A36 STRUCTURAL STEEL STANDARDS  
3/16" x 3/8" FLATBAR
2. WEIGHT: .04 lbs
3. TOLERANCE: ± .030

**APPROVED**

Washington State Department of Transportation  
HQ Traffic Operations Office

BY: [Signature] DATE: 3/20/2018



THIS DOCUMENT IS THE PROPERTY OF OLDCASTLE PRECAST, INC. IT IS CONFIDENTIAL, SUBMITTED FOR REFERENCE PURPOSES ONLY, AND SHALL NOT BE USED IN ANY WAY INJURIOUS TO THE INTERESTS OF, OR WITHOUT THE WRITTEN PERMISSION OF OLDCASTLE PRECAST, INC. COPYRIGHT © 2014 OLDCASTLE PRECAST, INC. ALL RIGHTS RESERVED.

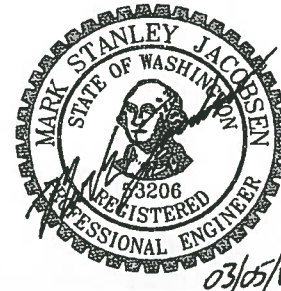
CLIP - VENDOR SUPPLIED

DOMESTIC MATERIAL REQUIRED

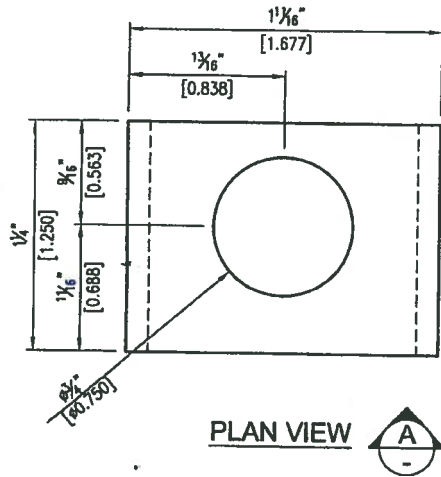
STANDARD PRODUCT (A12-110)

CUSTOMER

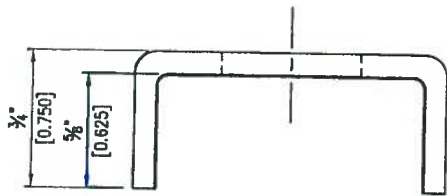
| DATE            | SALES | DRAWN | ENGINEER | CHECKED  | SALES ORDER |
|-----------------|-------|-------|----------|----------|-------------|
| 10/13/16        |       | CAS   |          |          |             |
| DRAWING NUMBER  |       |       |          | REVISION | SHEET       |
| 010-5210100-001 |       |       |          | D        | 1 OF 1      |
|                 |       |       |          | REV DATE |             |
|                 |       |       |          | 10/13/16 |             |



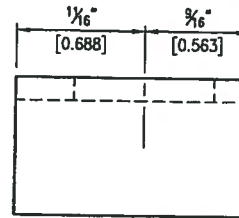
| D        | UPDATED DRAWING FORMAT | CAS |
|----------|------------------------|-----|
| REVISION | DESCRIPTION            | BY  |
|          |                        |     |



PLAN VIEW



VIEW A



VIEW B

NOTES

1. MATERIAL: ASTM A1011 STRUCTURAL STEEL STANDARDS  
11 GA MILD STEEL, GRADE A36
2. WEIGHT: 0.12 lbs
3. TOLERANCE: ± 0.30

**APPROVED**

Washington State Department of Transportation  
HQ Traffic Operations Office

BY: [Signature] DATE: 3/29/2018



**Oldcastle Precast®**

P.O. BOX 888 ALBUQUERQUE, NM 87071-0888  
PHONE: 800-852-1638 FAX: 505-776-1201

THIS DOCUMENT IS THE PROPERTY OF OLDCASTLE PRECAST, INC. IT IS CONFIDENTIAL, SUBMITTED FOR REFERENCE PURPOSES ONLY, AND SHALL NOT BE USED IN ANY WAY INJURIOUS TO THE INTERESTS OF, OR WITHOUT THE WRITTEN PERMISSION OF OLDCASTLE PRECAST, INC. COPYRIGHT © 2014 OLDCASTLE PRECAST, INC. ALL RIGHTS RESERVED.

**BOLT POCKET - VENDOR SUPPLIED**

DOMESTIC MATERIAL REQUIRED

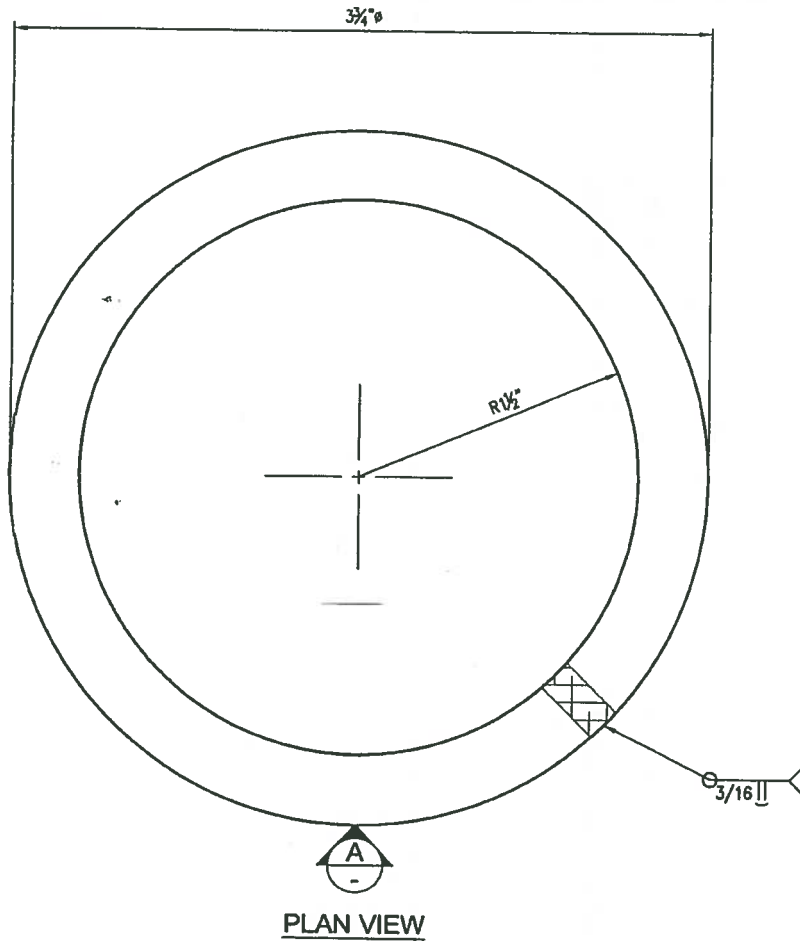
STANDARD PRODUCT (A12-275)

CUSTOMER

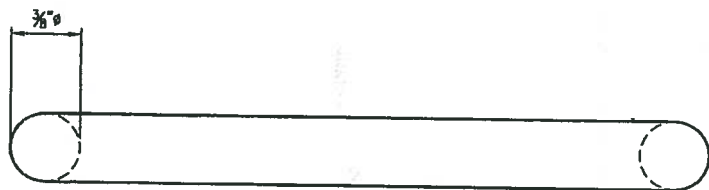
| DATE            | SALES | DRAWN | ENGINEER | CHECKED  | SALES ORDER |
|-----------------|-------|-------|----------|----------|-------------|
| 10/27/16        |       | CAS   |          |          |             |
| DRAWING NUMBER  |       |       |          | REVISION | SHEET       |
| 010-5310130-001 |       |       |          | B        | 1 OF 1      |
|                 |       |       |          | REV DATE |             |
|                 |       |       |          | 10/27/16 |             |



| REVISION | DESCRIPTION            | BY  |
|----------|------------------------|-----|
| B        | UPDATED DRAWING FORMAT | CAS |



PLAN VIEW



VIEW A

SHOP NOTES

1. MATERIAL: 3/8" ASTM A108 STEEL
2. OVERALL DIMENSIONS HAVE A TOLERANCE OF  $\pm 1/16$ "
3. GRIND ALL SHARP EDGES
4. WEIGHT: 0.33 lbs

**APPROVED**

Washington State Department of Transportation  
 HQ Traffic Operations Office

BY: [Signature] DATE: 3/20/2018



**Oldcastle Precast®**

P.O. BOX 600 ALBUQU, WA 98071-0500  
 PHONE: 800-883-1830 FAX: 206-736-4201

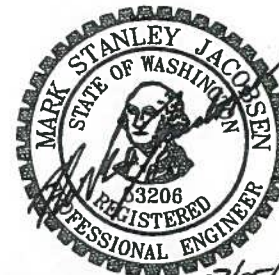
THIS DOCUMENT IS THE PROPERTY OF OLDCASTLE PRECAST, INC. IT IS CONFIDENTIAL, SUBMITTED FOR REFERENCE PURPOSES ONLY, AND SHALL NOT BE USED IN ANY WAY INJURIOUS TO THE INTERESTS OF OR WITHOUT THE WRITTEN PERMISSION OF OLDCASTLE PRECAST, INC. COPYRIGHT © 2014 OLDCASTLE PRECAST, INC. ALL RIGHTS RESERVED.

RING HANDLE

STANDARD PRODUCT

CUSTOMER

| DATE            | SALES | DRAWN | ENGINEER | CHECKED  | SALES ORDER |
|-----------------|-------|-------|----------|----------|-------------|
| 12/10/14        |       | WS    |          |          |             |
| DRAWING NUMBER  |       |       |          | REVISION | SHEET       |
| 010-5210090-001 |       |       |          | REV DATE | 1 OF 1      |



03/05/18

| REVISION | DESCRIPTION | BY |
|----------|-------------|----|
|          |             |    |