

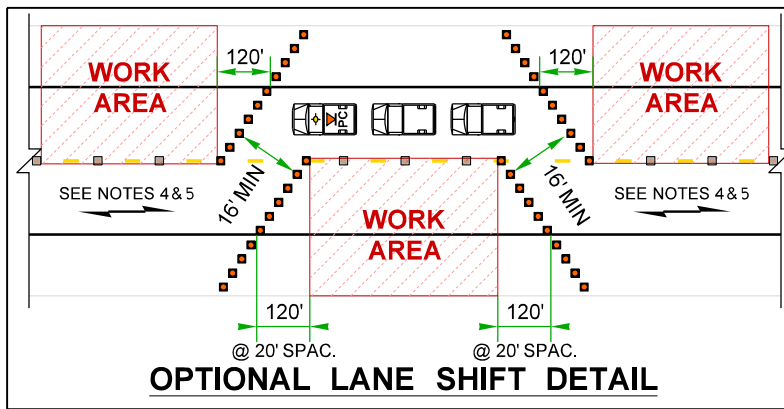
RECOMMENDED SIGN SPACING = X (1)		
RURAL HIGHWAYS	60-65 MPH	800±
RURAL ROADS	45-55 MPH	500±

(1) ALL SPACING MAY BE ADJUSTED TO ACCOMMODATE INTERCHANGE RAMPS, AT-GRADE INTERSECTIONS AND DRIVEWAYS.

LONGITUDINAL BUFFER SPACE = B					
SPEED (MPH)	45	50	55	60	65
B (feet)	360	425	495	570	645

Buffer space may be adjusted (±) based on field conditions.

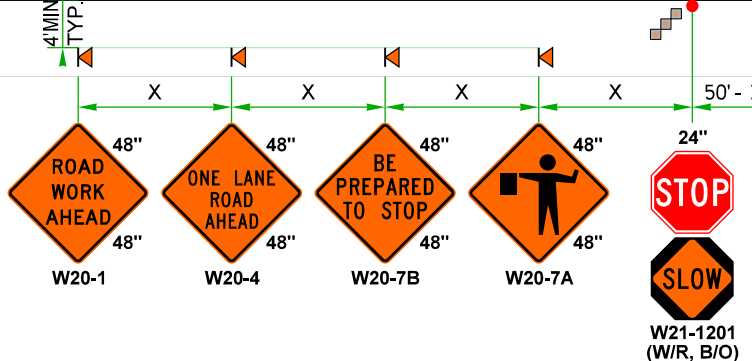
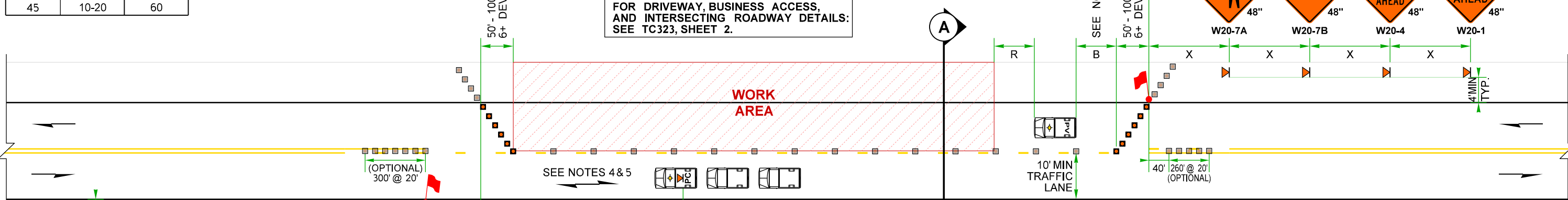
MAXIMUM CHANNELIZATION DEVICE SPACING (feet)		
MPH	TAPER	TANGENT
50 - 65	10-20	80
45	10-20	60



FOR DRIVEWAY, BUSINESS ACCESS, AND INTERSECTING ROADWAY DETAILS: SEE TC323, SHEET 2.

PROTECTIVE VEHICLE ROLL AHEAD DISTANCE = R
STRATEGICALLY POSITION WORK VEHICLE TO PROTECT WORK CREW. 40' - 80' RECOMMENDED.

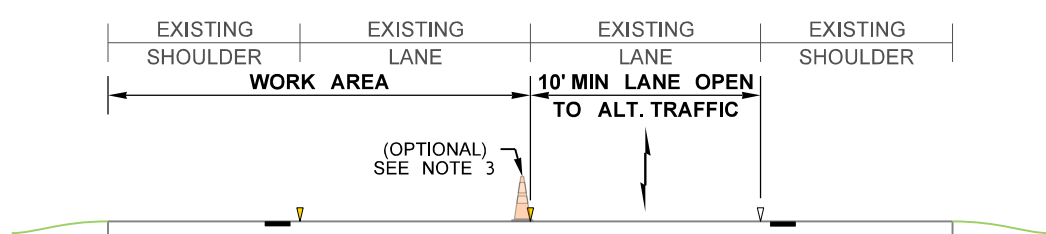
STATIONARY TRANSPORTABLE ATTENUATOR ROLL AHEAD DISTANCE = R			
HOST VEHICLE WEIGHT LESS THAN 22,000 lbs.		HOST VEHICLE WEIGHT 22,000+ lbs.	
45-55 MPH	60+ MPH	45-55 MPH	60+ MPH
123'	172'	100'	150'



TRUCK-MOUNTED PCMS	
1 PILOT CAR	2 FOLLOW ME
2.0 SEC	2.0 SEC

10+ INCH CHARACTERS MOUNTED TO PILOT CAR.

- NOTES:**
- AVOID PLACING LANE CLOSURE TAPERS WITHIN OR IMMEDIATELY FOLLOWING HORIZONTAL & VERTICAL CURVES BY ADJUSTING LONGITUDINAL BUFFER.
 - IF LONGITUDINAL BUFFER SPACE REDUCED FROM DISTANCES LISTED IN TABLE, UPGRADE PROTECTIVE VEHICLE (PV) TO A TRANSPORTABLE ATTENUATOR (TA). ADDITIONAL PV/TAs MAY BE ADDED AT SEPARATE WORK CREWS.
 - MAY SHIFT LATERALLY. 28" REFLECTIVE TRAFFIC CONES AT CENTERLINE ARE OPTIONAL. 36" TRAFFIC CONES, 42" TALL CHANNELIZATION DEVICES, OR TRAFFIC SAFETY DRUMS OK.
 - PEDESTRIAN & BICYCLIST ACCOMMODATIONS (ENGINEER TO ACCEPT ANY ALTERNATIVE STRATEGIES):
(A) ALLOW PEDESTRIANS TO USE THE PAVED SHOULDER OR ADJACENT PATH OPPOSITE THE WORK AREA
(B) COMBINE BIKES WITH VEHICULAR TRAFFIC. BIKES ESCORTED DIRECTLY BEHIND PILOT CAR @ 10± MPH
(C) PROVIDE FREE PED/BIKE SHUTTLE (PILOT CAR, WORK VEHICLE, VAN, OR BUS MAY BE USED)
(D) ALTERNATE BIKE/PEDS USING A SEPARATED 2-WAY BIKE LANE (SEE SHEET 3)
 - PILOT CAR OPERATOR TO DRIVE SPEED PRUDENT FOR WORK ZONE CONDITIONS, STOPPING TRAFFIC IF NECESSARY, UP TO A MAXIMUM SPEED OF 35 MPH (25 MPH AT LANE SHIFT), 10± MPH WHEN ESCORTING BIKES.
 - SEE STANDARD SPECIFICATIONS FOR ADDITIONAL REQUIREMENTS:
1-07.8(1) HIGH-VISIBILITY APPAREL
1-10.3(1)A FLAGGERS AND NIGHTTIME ILLUMINATION
1-10.3(2)A TRAFFIC CONTROL PROCEDURES
9-35.1 24-INCH STOP/SLOW PADDLE SIZE
 - FOR PROJECT-SPECIFIC REQUIREMENTS, SEE SPECIAL PROVISIONS.
 - SIGNS ARE BLACK ON ORANGE UNLESS OTHERWISE INDICATED.
 - EXISTING PAVEMENT MARKINGS MAY VARY.



- LEGEND:**
- TEMPORARY SIGN LOCATION
 - 28" REFLECTIVE TRAFFIC CONE (SEE NOTE 3)
 - OPTIONAL CHANNELIZATION DEVICE
 - PROTECTIVE VEHICLE (SEE NOTE 2)
 - PILOT CAR (SEE NOTES 4 & 5)
 - MOTORIST VEHICLE
 - FLAGGER

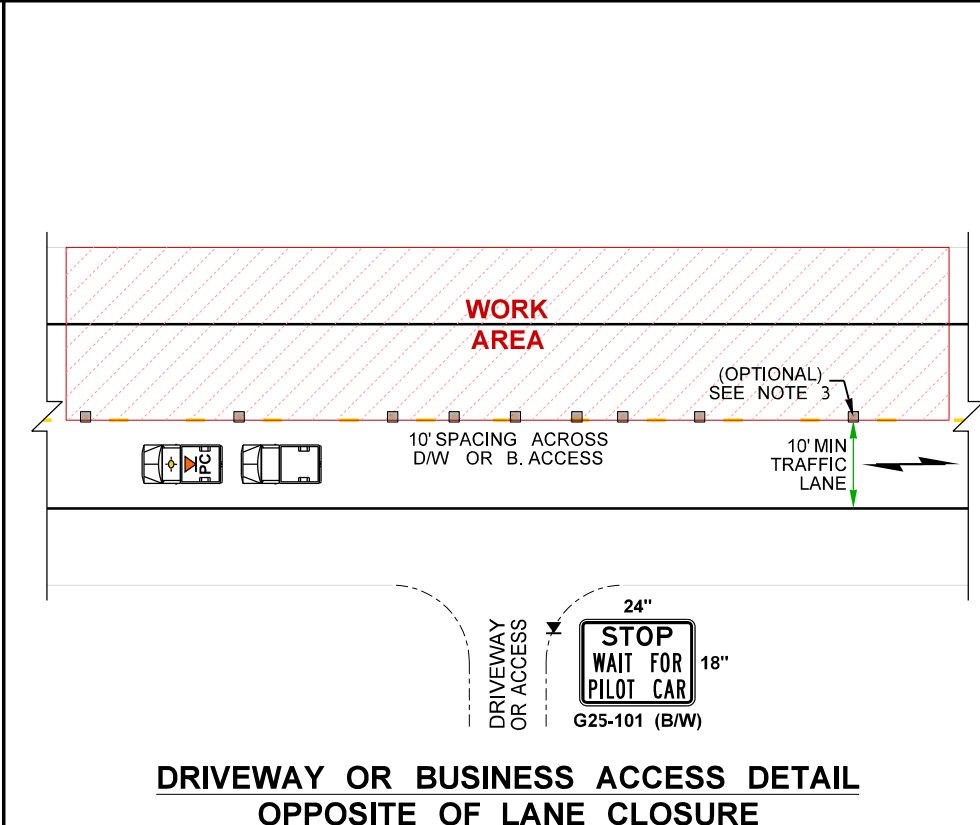
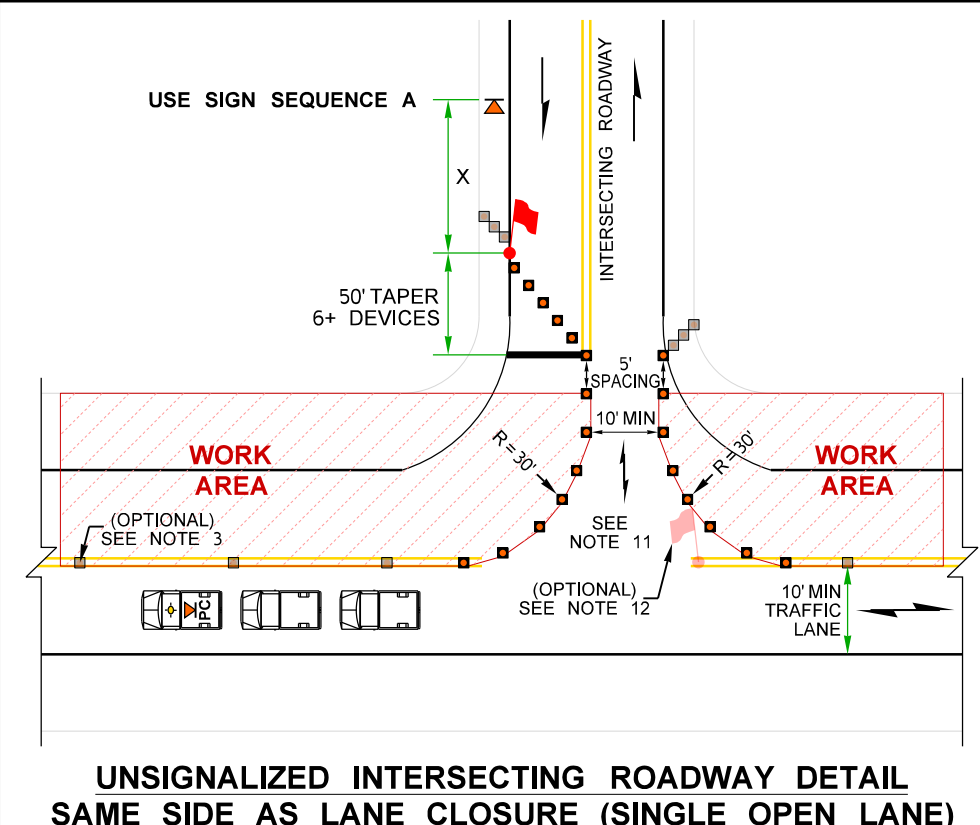
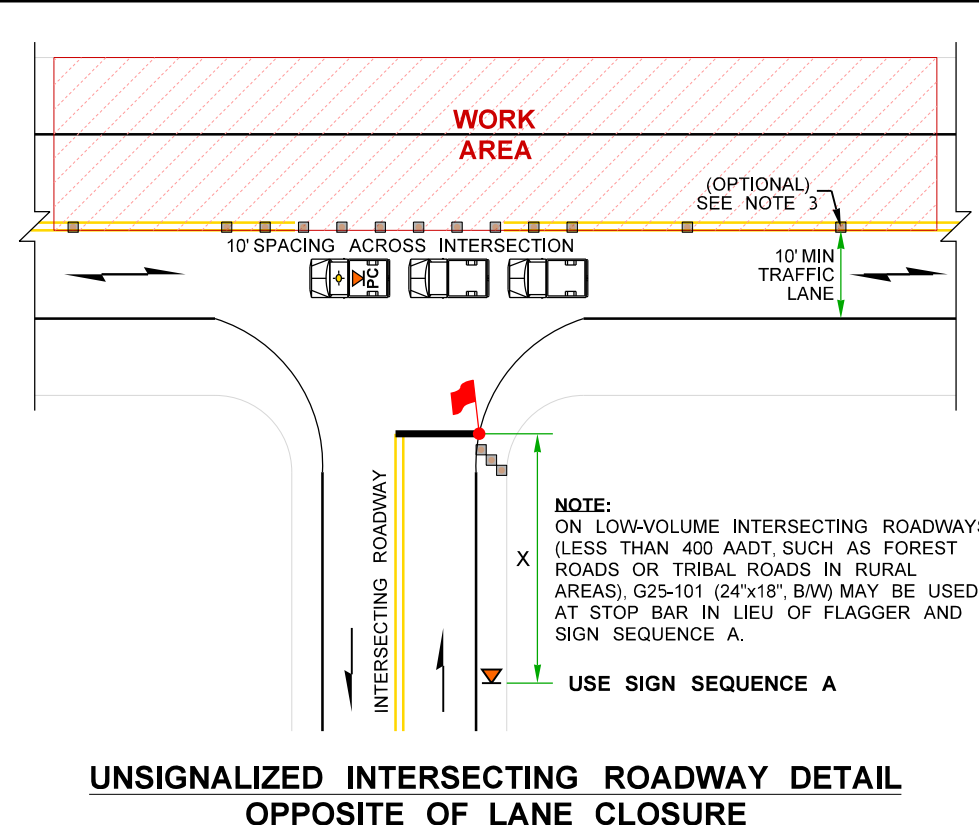
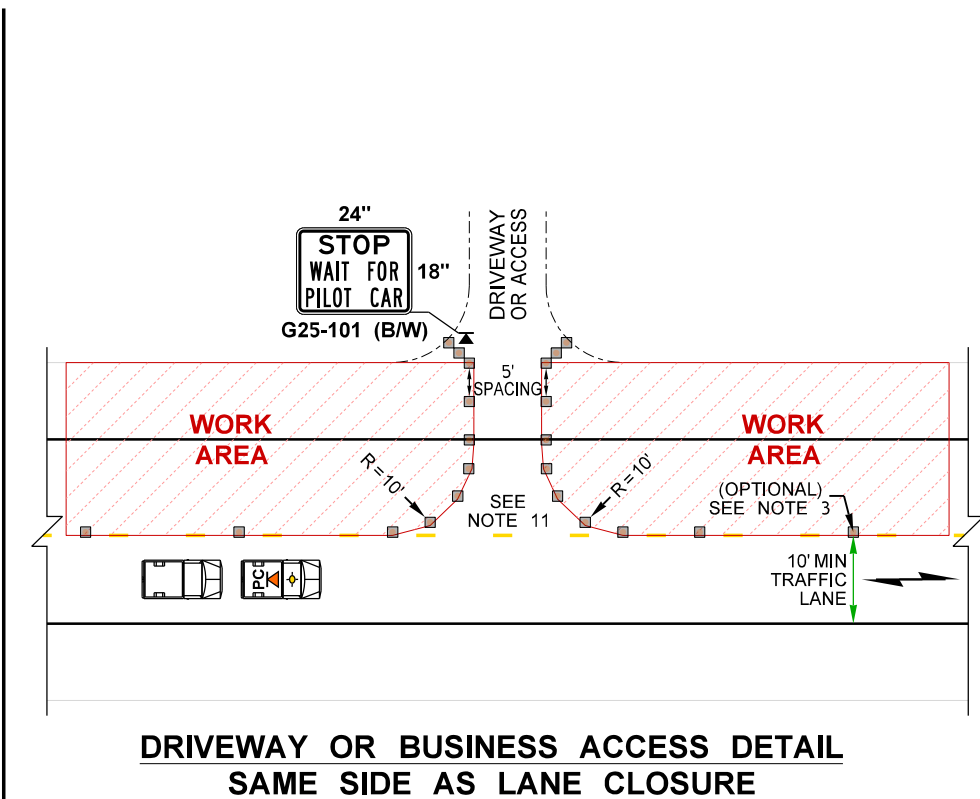
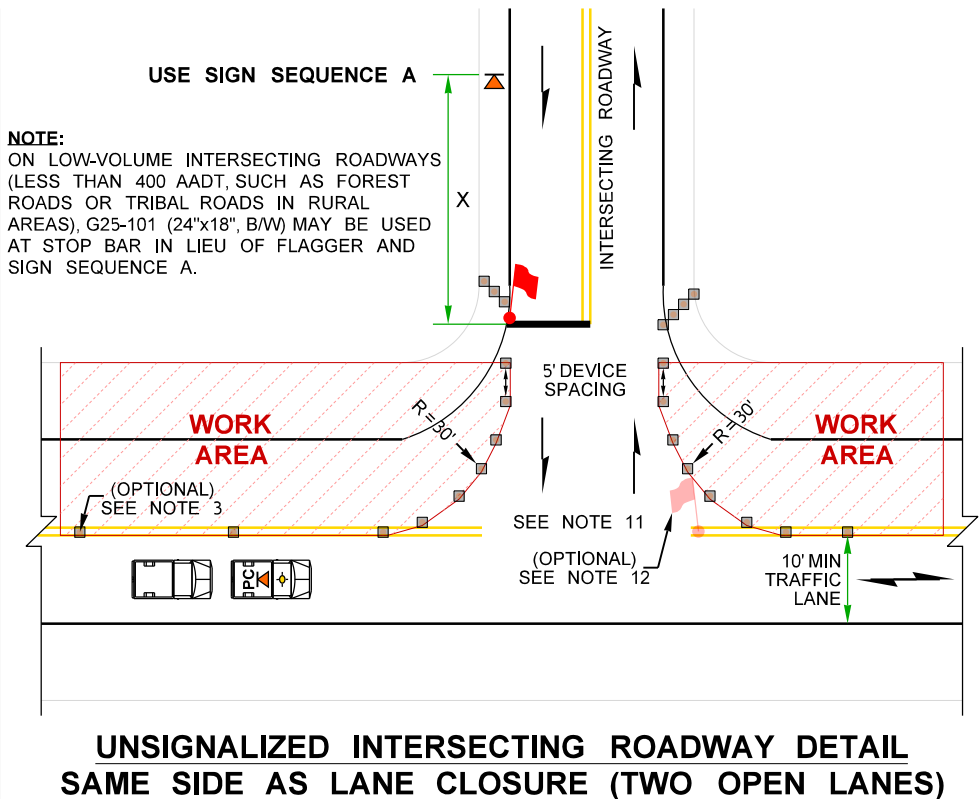
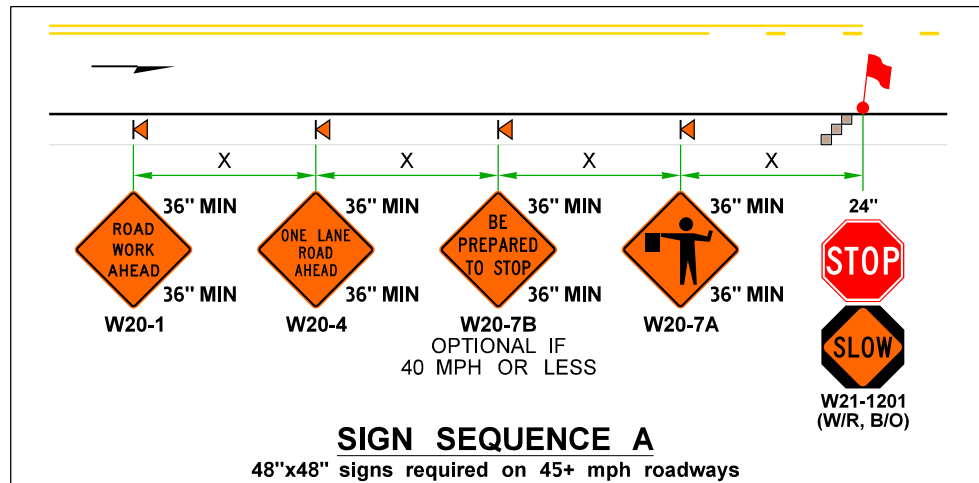
PILOT CAR OPERATION FOR ALTERNATING 1-LANE, 2-WAY TRAFFIC: FLAGGER-CONTROLLED SHARED BIKE-VEHICLE LANE STRATEGY (45+ MPH HIGHWAYS)

NOT TO SCALE

FILE NAME: C:\Users\LintzF\OneDrive - Washington State Department of Transportation\Desktop\Work Zone TCPS\323Hwy45+AltTrafficFlaggerPilotCarOp.dgn TIME: 1:53:46 PM DATE: 4/2/2024 PLOTTED BY: LintzF DESIGNED BY: ENTERED BY: CHECKED BY: PROJ. ENGR. REGIONAL ADM.	FED.AID PROJ.NO. REGION NO. STATE 10 WASH JOB NUMBER CONTRACT NO. LOCATION NO.	DATE P.E. STAMP BOX	DATE P.E. STAMP BOX	 Washington State Department of Transportation	Plot 1 PLAN REF NO TC323 SHEET 1 OF 4 SHEETS
REVISION	DATE	BY	TYPICAL TRAFFIC CONTROL PLANS		

NOTES:

- 10. FOR LEGEND, TABLES, AND ADDITIONAL NOTES: SEE TC323, SHEET 1.
- 11. WORK MAY BRIEFLY OCCUR WITHIN LANE CLOSURE ACROSS INTERSECTING ROADWAY APPROACHES, BUSINESS ACCESSES, OR DRIVEWAYS. **MAY HOLD APPROACH OR ACCESS TRAFFIC FOR 5 MINUTES OR LESS** (ENGINEER MAY ACCEPT HOLDS UP TO 10 MINUTES) WHILE RESTRICTING TURNS FROM MAINLINE. CHANNELIZATION DEVICES DELINEATING APPROACH OR ACCESS MAY BE REMOVED OR RELOCATED AS NEEDED.
- 12. SINGLE FLAGGER (WITH RED FLAG/RED GLOW CONE FLASHLIGHT) MAY BE ADDED TO THE INTERSECTING ROADWAY APPROACH TO HELP GUIDE ALTERNATING & TURNING TRAFFIC.



PILOT CAR OPERATION FOR ALTERNATING 1-LANE, 2-WAY TRAFFIC: FLAGGER-CONTROLLED SHARED BIKE-VEHICLE LANE STRATEGY (45+ MPH HIGHWAYS)
NOT TO SCALE

FILE NAME	C:\Users\LintzF\OneDrive - Washington State Department of Transportation\Desktop\Work Zone TCPs\323Hwy45+AltTrafficFlaggerPilotCarOp.dgn				REGION NO.	STATE	FED.AID PROJ.NO.	Plot 2
TIME	1:53:46 PM				10	WASH		PLAN REF NO
DATE	4/2/2024							TC323
PLOTTED BY	LintzF				JOB NUMBER			SHEET
DESIGNED BY					CONTRACT NO.	LOCATION NO.		2
ENTERED BY								OF
CHECKED BY								4
PROJ. ENGR.								SHEETS
REGIONAL ADM.	REVISION	DATE	BY					TYPICAL TRAFFIC CONTROL PLANS



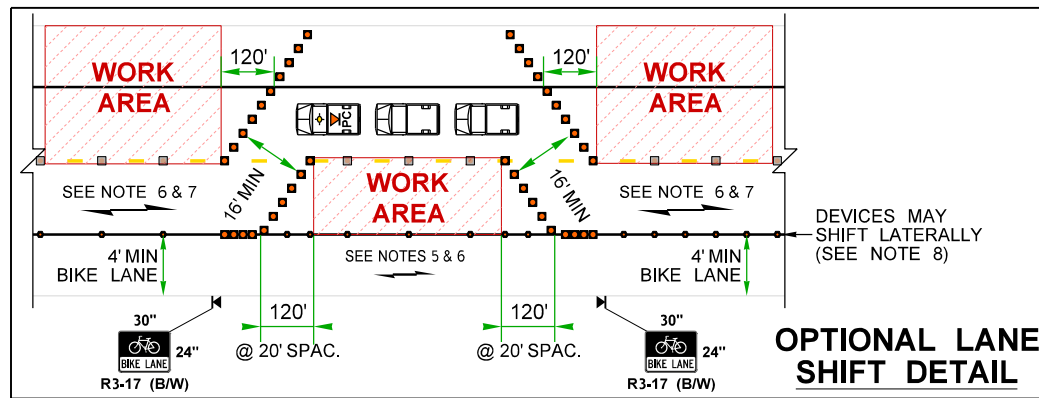
RECOMMENDED SIGN SPACING = X (1)		
RURAL HIGHWAYS	60-65 MPH	800±
RURAL ROADS	45-55 MPH	500±

(1) ALL SPACING MAY BE ADJUSTED TO ACCOMMODATE INTERCHANGE RAMP, AT-GRADE INTERSECTIONS AND DRIVEWAYS.

LONGITUDINAL BUFFER SPACE = B					
SPEED (MPH)	45	50	55	60	65
B (feet)	360	425	495	570	645

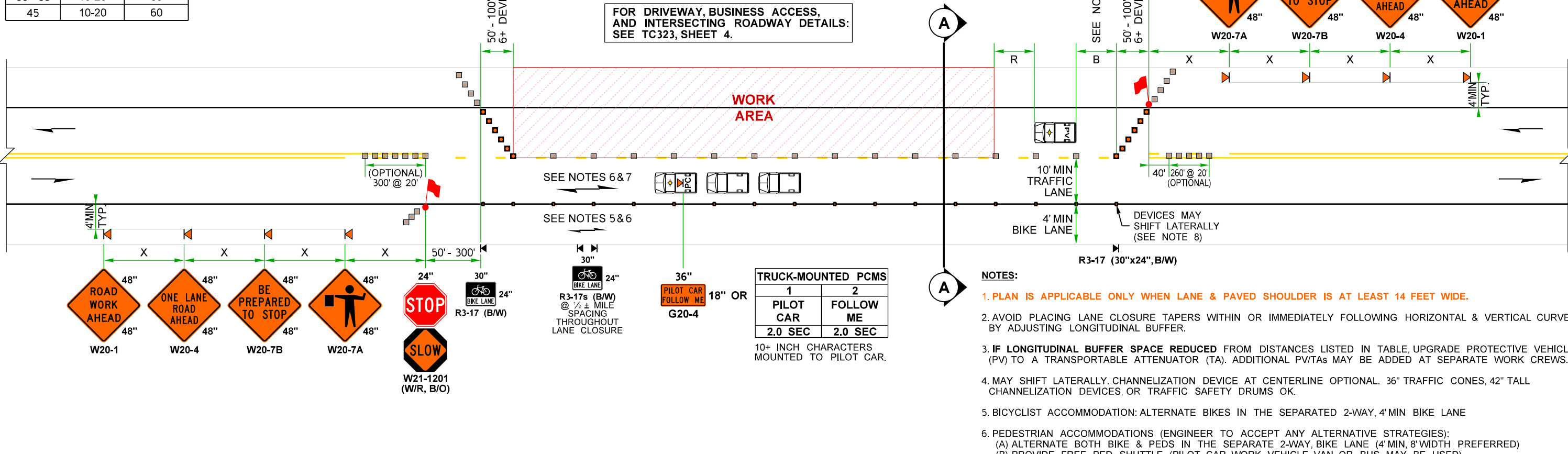
Buffer space may be adjusted (±) based on field conditions.

MAXIMUM CHANNELIZATION DEVICE SPACING (feet)		
MPH	TAPER	TANGENT
50 - 65	10-20	80
45	10-20	60

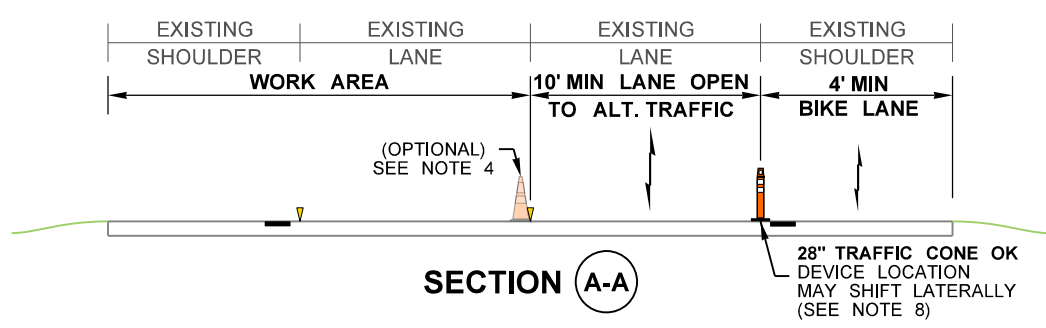


PROTECTIVE VEHICLE ROLL AHEAD DISTANCE = R
STRATEGICALLY POSITION WORK VEHICLE TO PROTECT WORK CREW. 40' - 80' RECOMMENDED.

STATIONARY TRANSPORTABLE ATTENUATOR ROLL AHEAD DISTANCE = R			
HOST VEHICLE WEIGHT LESS THAN 22,000 lbs.		HOST VEHICLE WEIGHT 22,000+ lbs.	
45-55 MPH	60+ MPH	45-55 MPH	60+ MPH
123'	172'	100'	150'



- NOTES:
- PLAN IS APPLICABLE ONLY WHEN LANE & PAVED SHOULDER IS AT LEAST 14 FEET WIDE.
 - AVOID PLACING LANE CLOSURE TAPERS WITHIN OR IMMEDIATELY FOLLOWING HORIZONTAL & VERTICAL CURVES BY ADJUSTING LONGITUDINAL BUFFER.
 - IF LONGITUDINAL BUFFER SPACE REDUCED FROM DISTANCES LISTED IN TABLE, UPGRADE PROTECTIVE VEHICLE (PV) TO A TRANSPORTABLE ATTENUATOR (TA). ADDITIONAL PVTAs MAY BE ADDED AT SEPARATE WORK CREWS.
 - MAY SHIFT LATERALLY. CHANNELIZATION DEVICE AT CENTERLINE OPTIONAL. 36" TRAFFIC CONES, 42" TALL CHANNELIZATION DEVICES, OR TRAFFIC SAFETY DRUMS OK.
 - BICYCLIST ACCOMMODATION: ALTERNATE BIKES IN THE SEPARATED 2-WAY, 4' MIN BIKE LANE
 - PEDESTRIAN ACCOMMODATIONS (ENGINEER TO ACCEPT ANY ALTERNATIVE STRATEGIES):
(A) ALTERNATE BOTH BIKE & PEDS IN THE SEPARATE 2-WAY, BIKE LANE (4' MIN, 8' WIDTH PREFERRED)
(B) PROVIDE FREE PED SHUTTLE (PILOT CAR, WORK VEHICLE, VAN, OR BUS MAY BE USED)
 - PILOT CAR OPERATOR TO DRIVE SPEED PRUDENT FOR WORK ZONE CONDITIONS, STOPPING TRAFFIC IF NECESSARY, UP TO A MAXIMUM SPEED OF 35 MPH (25 MPH AT LANE SHIFT).
 - 28" TRAFFIC CONE OK. DEVICE MAY SHIFT LATERALLY BUT PROVIDE 4' MIN BIKE LANE & 10' MIN TRAFFIC LANE.
 - SEE STANDARD SPECIFICATIONS FOR ADDITIONAL REQUIREMENTS:
1-07.8(1) HIGH-VISIBILITY APPAREL
1-10.3(1)A FLAGGERS AND NIGHTTIME ILLUMINATION
1-10.3(2)A TRAFFIC CONTROL PROCEDURES
9-35.1 24-INCH STOP/SLOW PADDLE SIZE
 - FOR PROJECT-SPECIFIC REQUIREMENTS, SEE SPECIAL PROVISIONS.
 - SIGNS ARE BLACK ON ORANGE UNLESS OTHERWISE INDICATED.
 - EXISTING PAVEMENT MARKINGS MAY VARY.



- LEGEND:
- TEMPORARY SIGN LOCATION
 - 28" REFLECTIVE TRAFFIC CONE (SEE NOTE 4)
 - OPTIONAL CHANNELIZATION DEVICE
 - 28" PORTABLE TUBULAR MARKER (SEE NOTE 8)
 - PROTECTIVE VEHICLE (SEE NOTE 3)
 - PILOT CAR (SEE NOTES 6 & 7)
 - MOTORIST VEHICLE
 - FLAGGER

PILOT CAR OPERATION FOR ALTERNATING 1-LANE, 2-WAY TRAFFIC: FLAGGER-CONTROLLED SEPARATED BICYCLE LANE STRATEGY (45+ MPH HIGHWAYS)

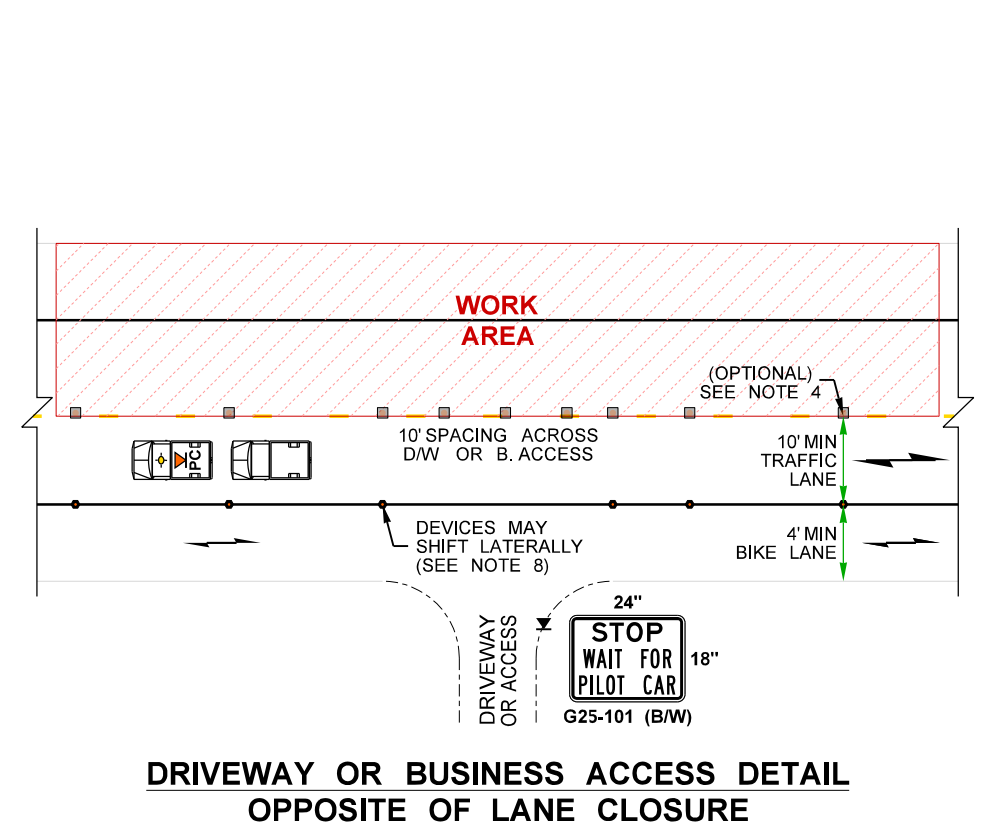
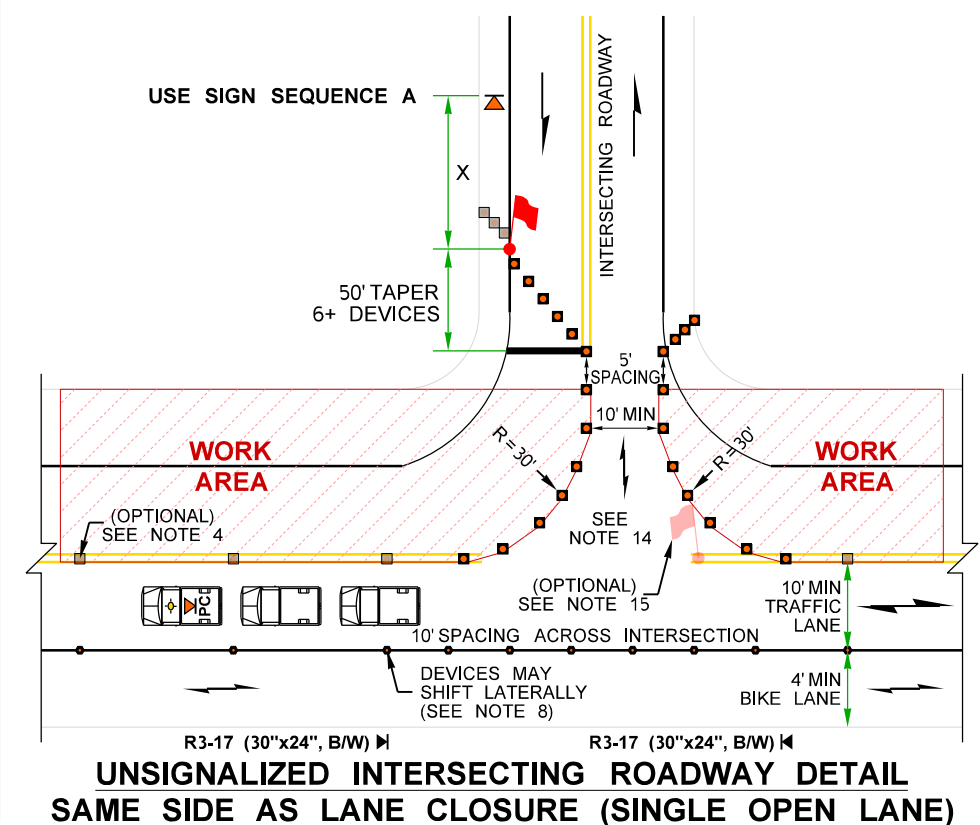
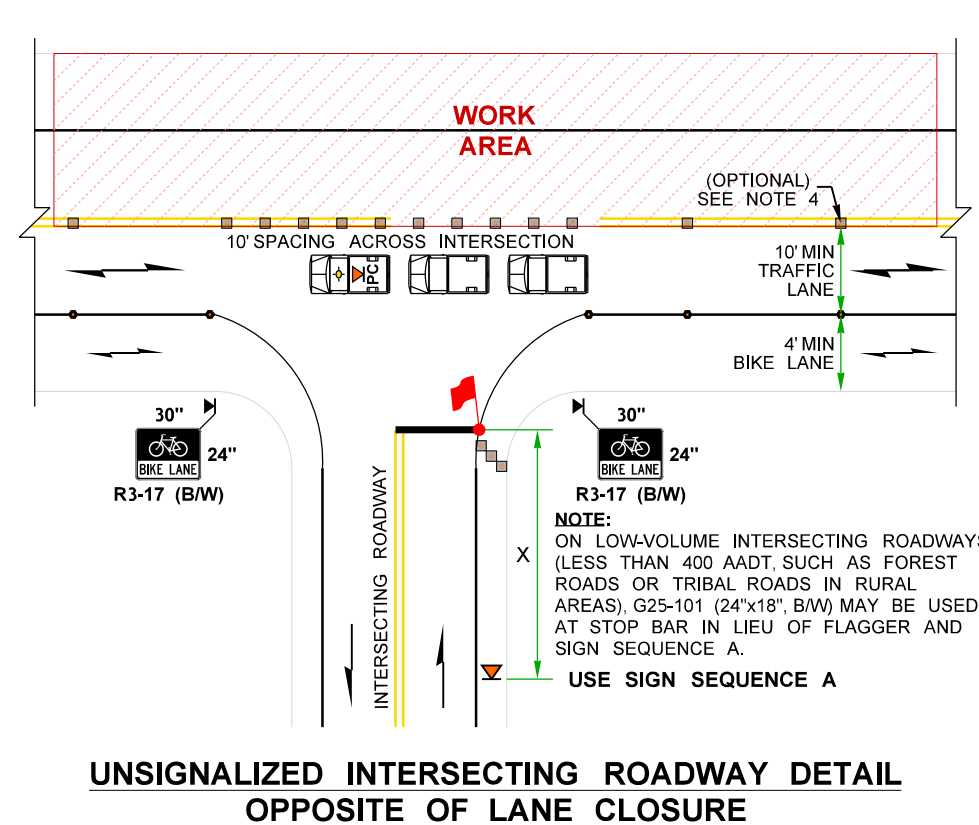
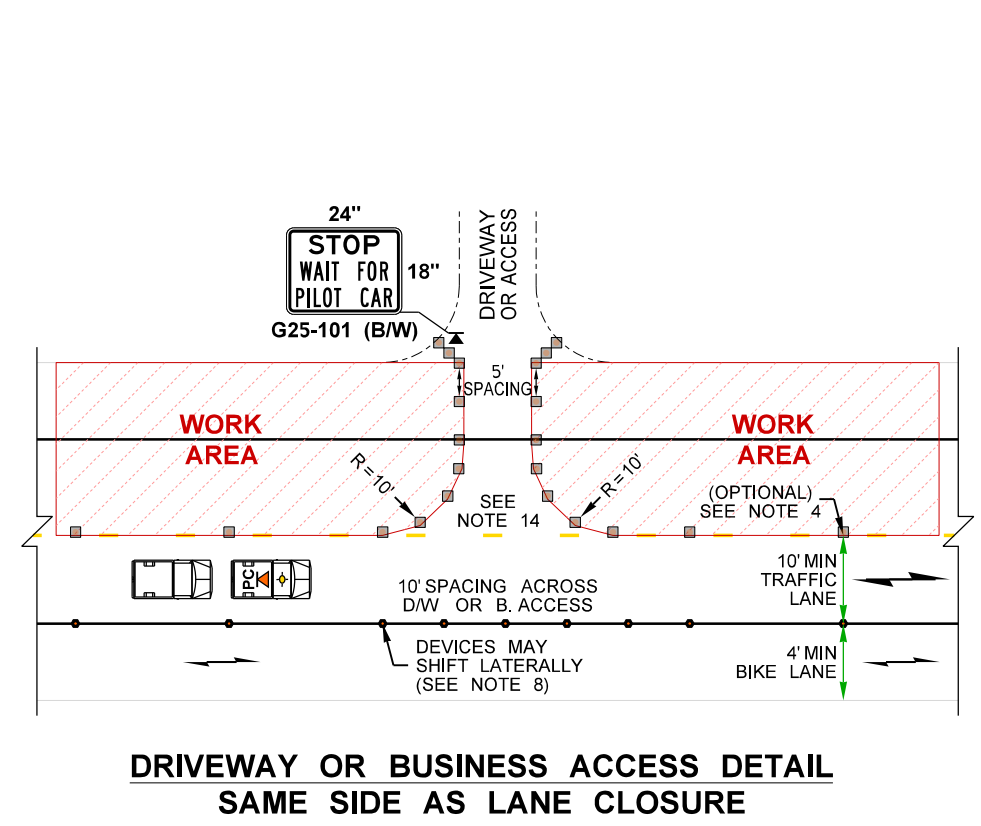
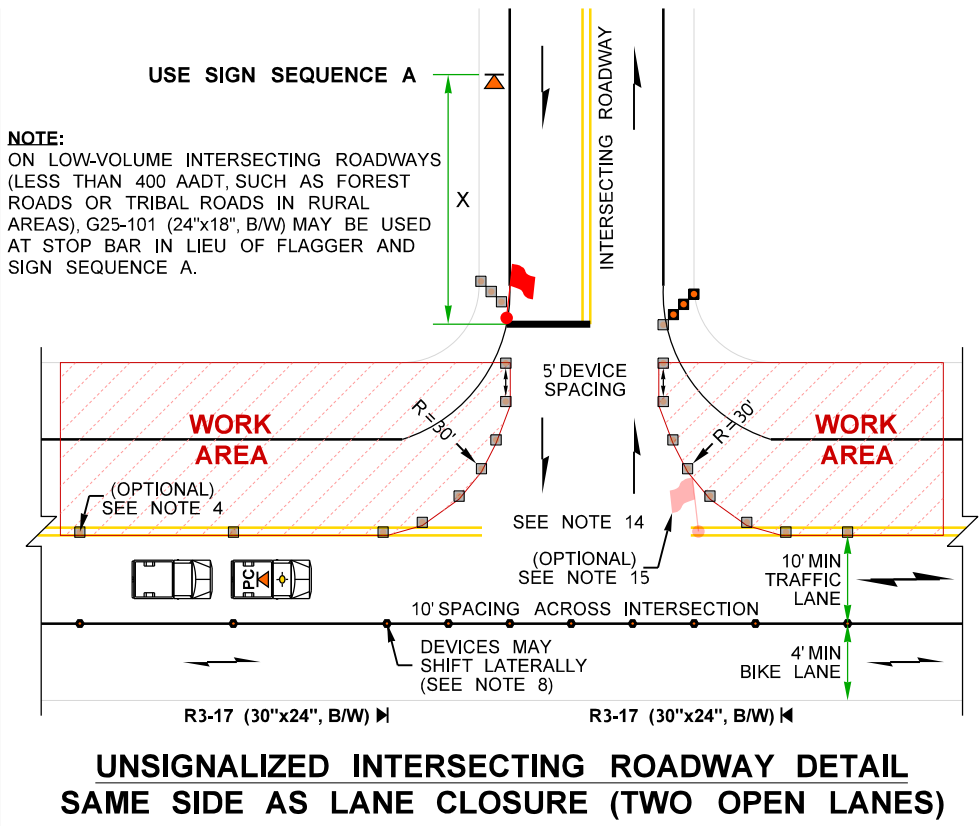
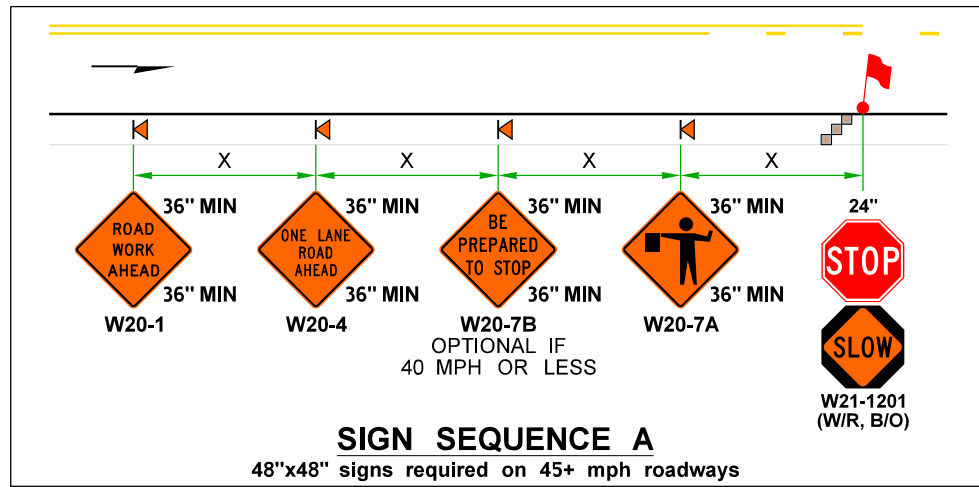
NOT TO SCALE

FILE NAME	C:\Users\LintzF\OneDrive - Washington State Department of Transportation\Desktop\Work Zone TCPs\323Hwy45+AltTrafficFlaggerPilotCarOp.dgn				REGION NO.	STATE	FED.AID PROJ.NO.	Plot 3
TIME	1:53:47 PM				10	WASH		PLAN REF NO. TC323
DATE	4/2/2024				JOB NUMBER			SHEET 3 OF 4 SHEETS
PLOTTED BY	LintzF				CONTRACT NO.		LOCATION NO.	TYPICAL TRAFFIC CONTROL PLANS
DESIGNED BY								
ENTERED BY								
CHECKED BY								
PROJ. ENGR.								
REGIONAL ADM.	REVISION	DATE	BY		P.E. STAMP BOX	DATE	P.E. STAMP BOX	

Washington State Department of Transportation

NOTES:

- 13. FOR LEGEND, TABLES, AND ADDITIONAL NOTES: SEE TC323, SHEET 3.
- 14. WORK MAY BRIEFLY OCCUR WITHIN LANE CLOSURE ACROSS INTERSECTING ROADWAY APPROACHES, BUSINESS ACCESSES, OR DRIVEWAYS. **MAY HOLD APPROACH OR ACCESS TRAFFIC FOR 5 MINUTES OR LESS** (ENGINEER MAY ACCEPT HOLDS UP TO 10 MINUTES) WHILE RESTRICTING TURNS FROM MAINLINE. CHANNELIZATION DEVICES DELINEATING APPROACH OR ACCESS MAY BE REMOVED OR RELOCATED AS NEEDED.
- 15. SINGLE FLAGGER (WITH RED FLAG/RED GLOW CONE FLASHLIGHT) MAY BE ADDED TO THE INTERSECTING ROADWAY APPROACH TO HELP GUIDE ALTERNATING & TURNING TRAFFIC.



PILOT CAR OPERATION FOR ALTERNATING 1-LANE, 2-WAY TRAFFIC: FLAGGER-CONTROLLED SEPARATED BICYCLE LANE STRATEGY (45+ MPH HIGHWAYS)
NOT TO SCALE

FILE NAME	C:\Users\LintzF\OneDrive - Washington State Department of Transportation\Desktop\Work Zone TCPs\323Hwy45+AltTrafficFlaggerPilotCarOp.dgn			REGION NO.	STATE	FED.AID PROJ.NO.	Plot 4
TIME	1:53:47 PM			10	WASH		PLAN REF NO
DATE	4/2/2024						TC323
PLOTTED BY	LintzF			JOB NUMBER			SHEET
DESIGNED BY				CONTRACT NO.	LOCATION NO.		4
ENTERED BY							OF
CHECKED BY							4
PROJ. ENGR.							SHEETS
REGIONAL ADM.	REVISION	DATE	BY				TYPICAL TRAFFIC CONTROL PLANS



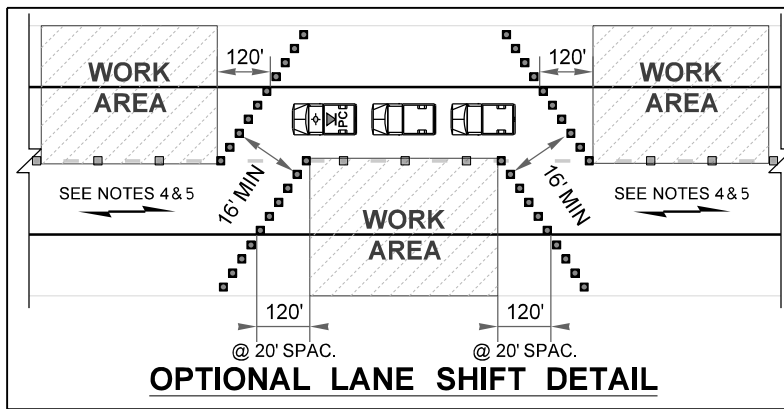
RECOMMENDED SIGN SPACING = X (1)		
RURAL HIGHWAYS	60-65 MPH	800±
RURAL ROADS	45-55 MPH	500±

(1) ALL SPACING MAY BE ADJUSTED TO ACCOMMODATE INTERCHANGE RAMP, AT-GRADE INTERSECTIONS AND DRIVEWAYS.

LONGITUDINAL BUFFER SPACE = B					
SPEED (MPH)	45	50	55	60	65
B (feet)	360	425	495	570	645

Buffer space may be adjusted (±) based on field conditions.

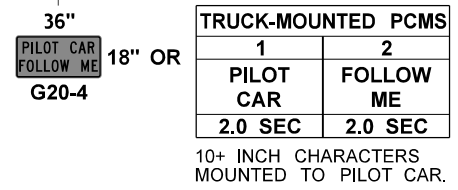
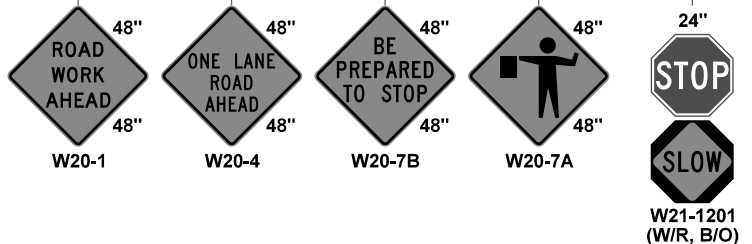
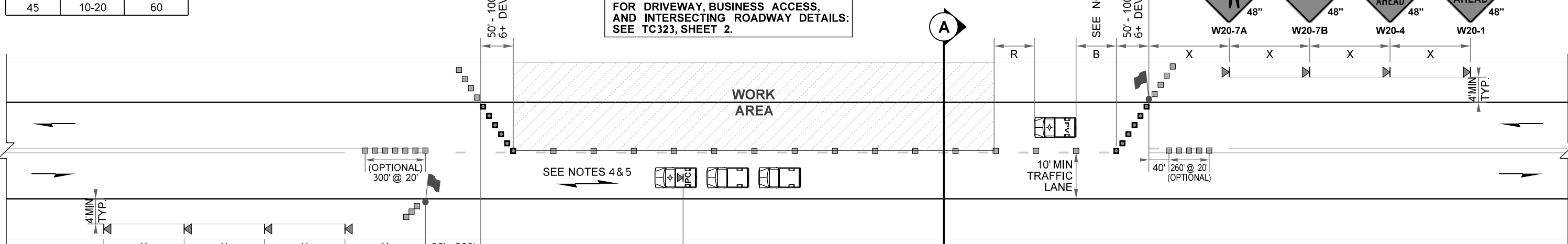
MAXIMUM CHANNELIZATION DEVICE SPACING (feet)		
MPH	TAPER	TANGENT
50 - 65	10-20	80
45	10-20	60



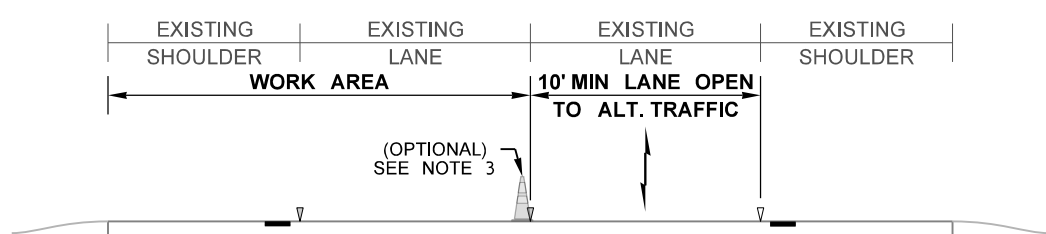
FOR DRIVEWAY, BUSINESS ACCESS, AND INTERSECTING ROADWAY DETAILS: SEE TC323, SHEET 2.

PROTECTIVE VEHICLE ROLL AHEAD DISTANCE = R
STRATEGICALLY POSITION WORK VEHICLE TO PROTECT WORK CREW. 40' - 80' RECOMMENDED.

STATIONARY TRANSPORTABLE ATTENUATOR ROLL AHEAD DISTANCE = R			
HOST VEHICLE WEIGHT LESS THAN 22,000 lbs.		HOST VEHICLE WEIGHT 22,000+ lbs.	
45-55 MPH	60+ MPH	45-55 MPH	60+ MPH
123'	172'	100'	150'



- NOTES:**
- AVOID PLACING LANE CLOSURE TAPERS WITHIN OR IMMEDIATELY FOLLOWING HORIZONTAL & VERTICAL CURVES BY ADJUSTING LONGITUDINAL BUFFER.
 - IF LONGITUDINAL BUFFER SPACE REDUCED FROM DISTANCES LISTED IN TABLE, UPGRADE PROTECTIVE VEHICLE (PV) TO A TRANSPORTABLE ATTENUATOR (TA). ADDITIONAL PV/TAs MAY BE ADDED AT SEPARATE WORK CREWS.
 - MAY SHIFT LATERALLY. 28" REFLECTIVE TRAFFIC CONES AT CENTERLINE ARE OPTIONAL. 36" TRAFFIC CONES, 42" TALL CHANNELIZATION DEVICES, OR TRAFFIC SAFETY DRUMS OK.
 - PEDESTRIAN & BICYCLIST ACCOMMODATIONS (ENGINEER TO ACCEPT ANY ALTERNATIVE STRATEGIES):
(A) ALLOW PEDESTRIANS TO USE THE PAVED SHOULDER OR ADJACENT PATH OPPOSITE THE WORK AREA
(B) COMBINE BIKES WITH VEHICULAR TRAFFIC. BIKES ESCORTED DIRECTLY BEHIND PILOT CAR @ 10± MPH
(C) PROVIDE FREE PED/BIKE SHUTTLE (PILOT CAR, WORK VEHICLE, VAN, OR BUS MAY BE USED)
(D) ALTERNATE BIKE/PEDS USING A SEPARATED 2-WAY BIKE LANE (SEE SHEET 3)
 - PILOT CAR OPERATOR TO DRIVE SPEED PRUDENT FOR WORK ZONE CONDITIONS, STOPPING TRAFFIC IF NECESSARY, UP TO A MAXIMUM SPEED OF 35 MPH (25 MPH AT LANE SHIFT), 10± MPH WHEN ESCORTING BIKES.
 - SEE STANDARD SPECIFICATIONS FOR ADDITIONAL REQUIREMENTS:
1-07.8(1) HIGH-VISIBILITY APPAREL
1-10.3(1)A FLAGGERS AND NIGHTTIME ILLUMINATION
1-10.3(2)A TRAFFIC CONTROL PROCEDURES
9-35.1 24-INCH STOP/SLOW PADDLE SIZE
 - FOR PROJECT-SPECIFIC REQUIREMENTS, SEE SPECIAL PROVISIONS.
 - SIGNS ARE BLACK ON ORANGE UNLESS OTHERWISE INDICATED.
 - EXISTING PAVEMENT MARKINGS MAY VARY.



PILOT CAR OPERATION FOR ALTERNATING 1-LANE, 2-WAY TRAFFIC: FLAGGER-CONTROLLED SHARED BIKE-VEHICLE LANE STRATEGY (45+ MPH HIGHWAYS)

NOT TO SCALE

- LEGEND:**
- TEMPORARY SIGN LOCATION
 - 28" REFLECTIVE TRAFFIC CONE (SEE NOTE 3)
 - OPTIONAL CHANNELIZATION DEVICE
 - PROTECTIVE VEHICLE (SEE NOTE 2)
 - PILOT CAR (SEE NOTES 4 & 5)
 - MOTORIST VEHICLE
 - FLAGGER

FILE NAME	C:\Users\LintzF\OneDrive - Washington State Department of Transportation\Desktop\Work Zone TCPS\323Hwy45+AltTrafficFlaggerPilotCarOp.dgn			Plot 1
TIME	1:53:48 PM			PLAN REF NO
DATE	4/2/2024			TC323
PLOTTED BY	LintzF	REGION NO.	10	STATE
DESIGNED BY		JOB NUMBER		WASH
ENTERED BY		CONTRACT NO.		
CHECKED BY		LOCATION NO.		
PROJ. ENGR.				
REGIONAL ADM.	REVISION	DATE	BY	



TYPICAL TRAFFIC CONTROL PLANS

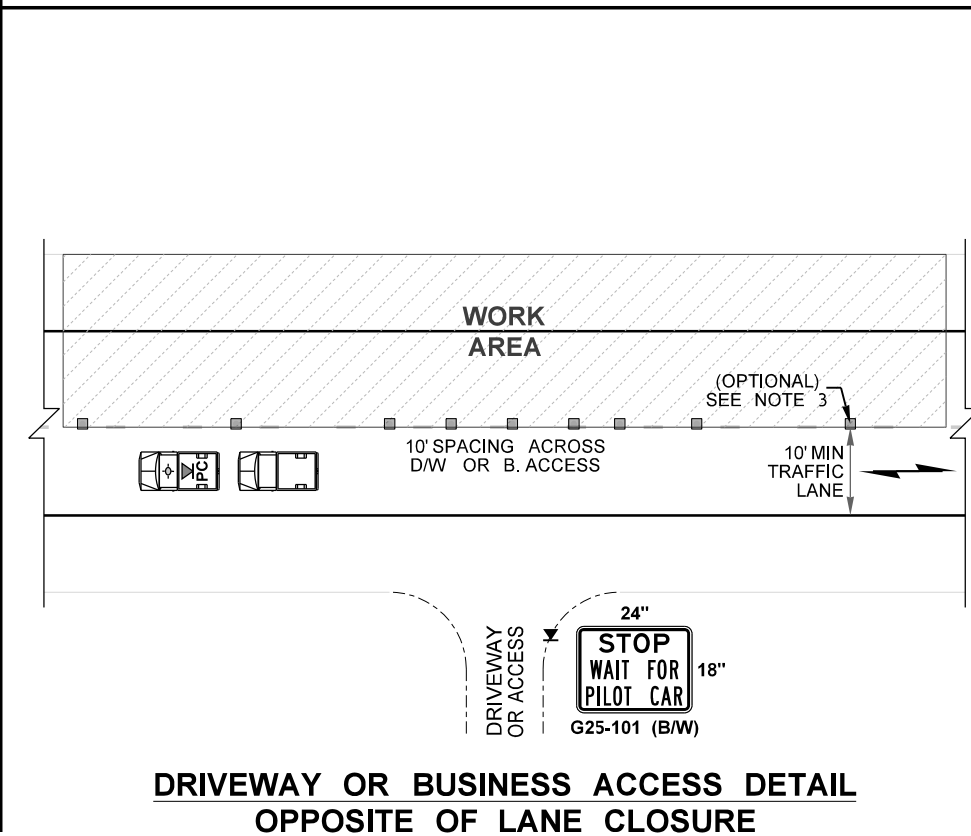
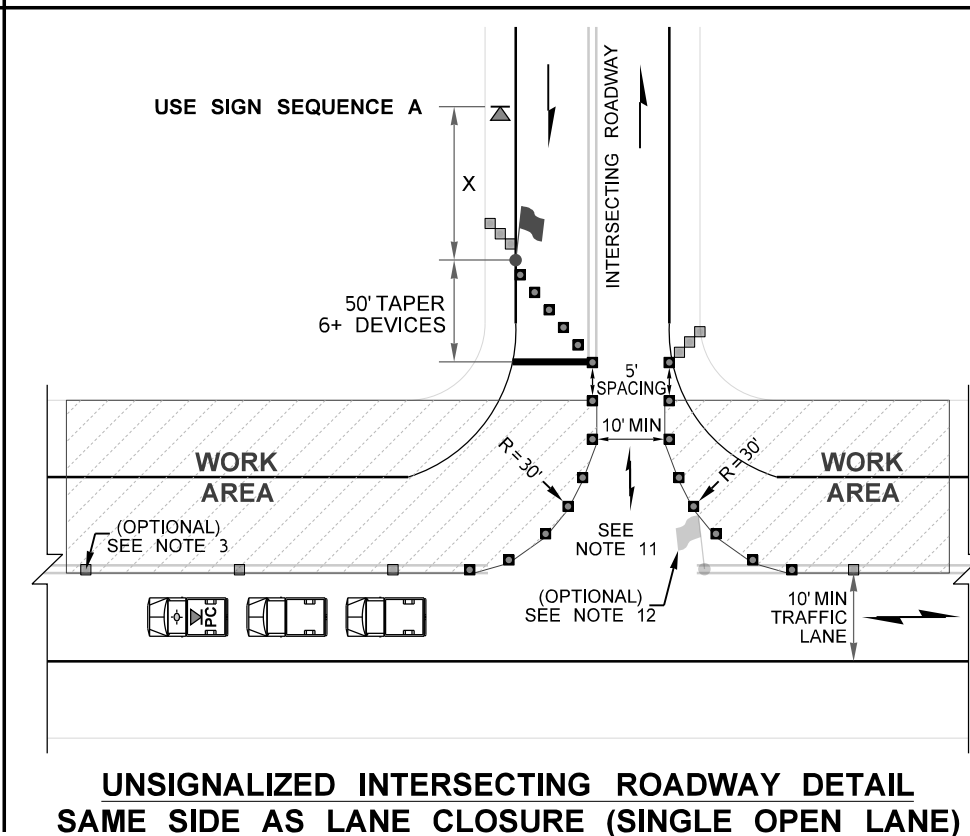
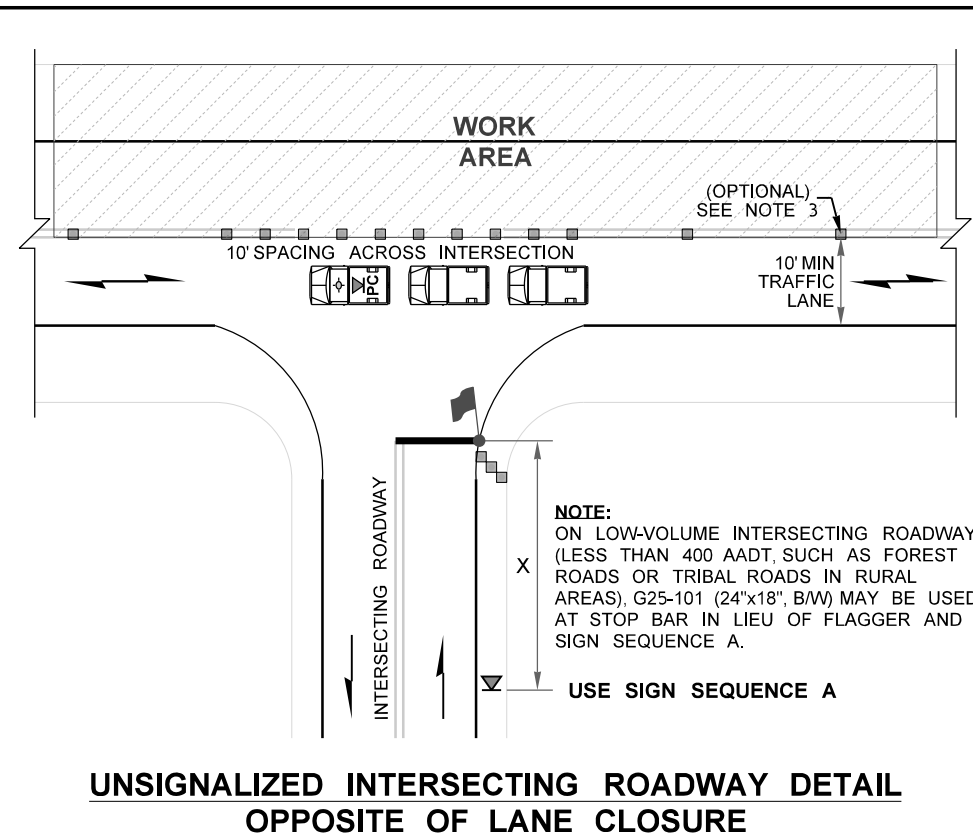
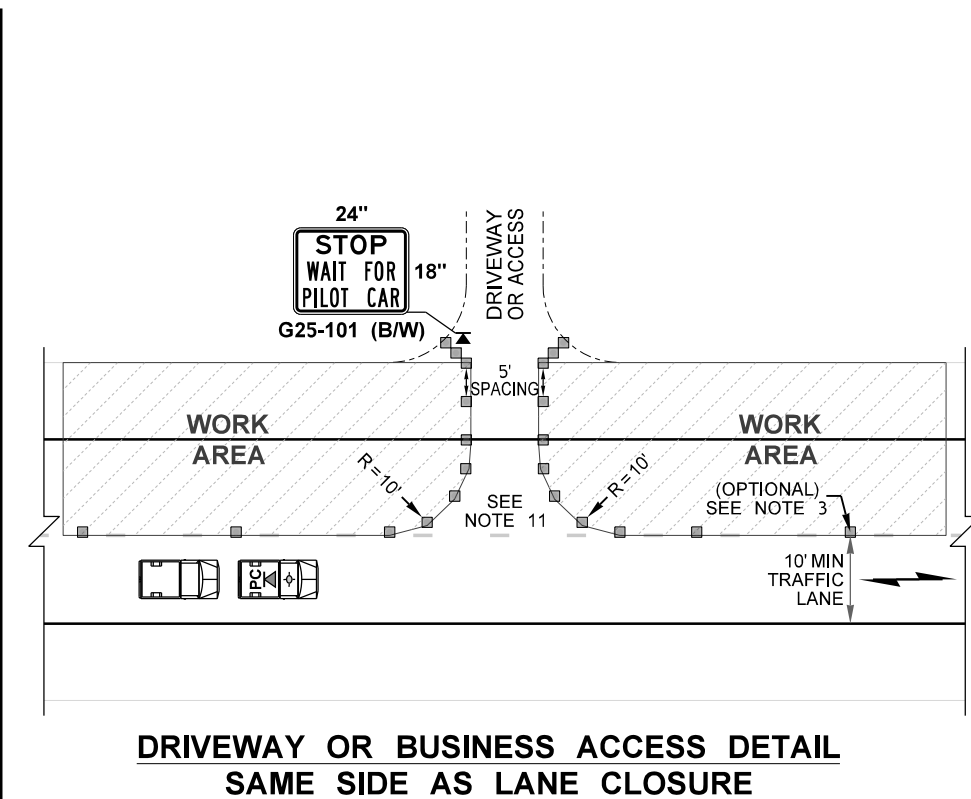
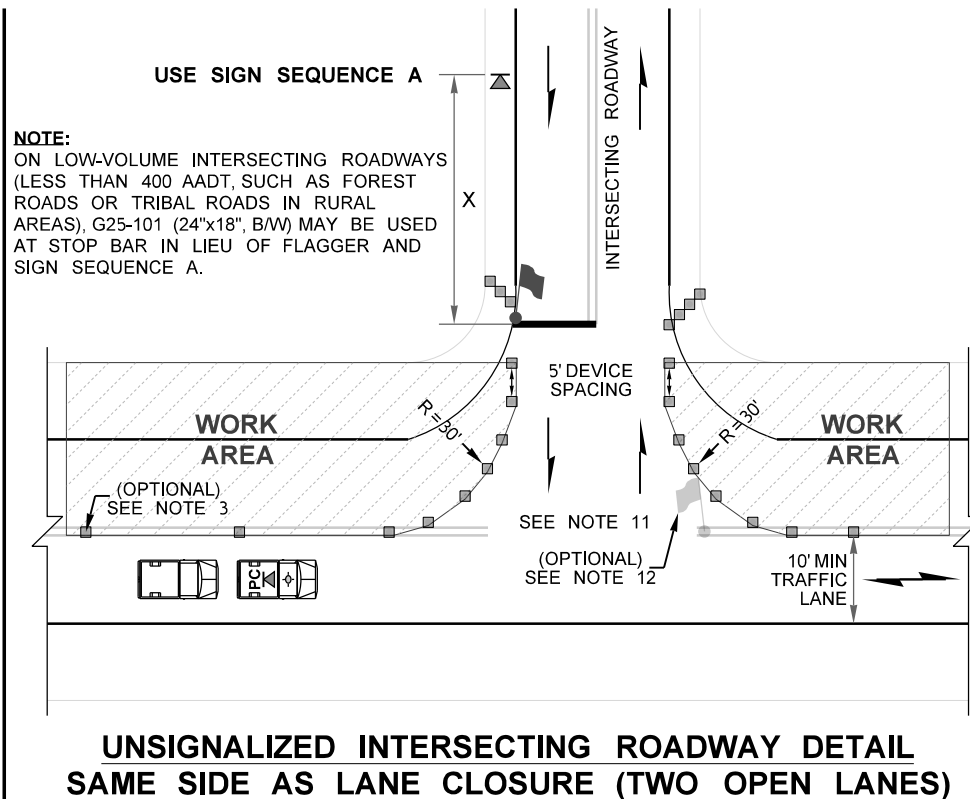
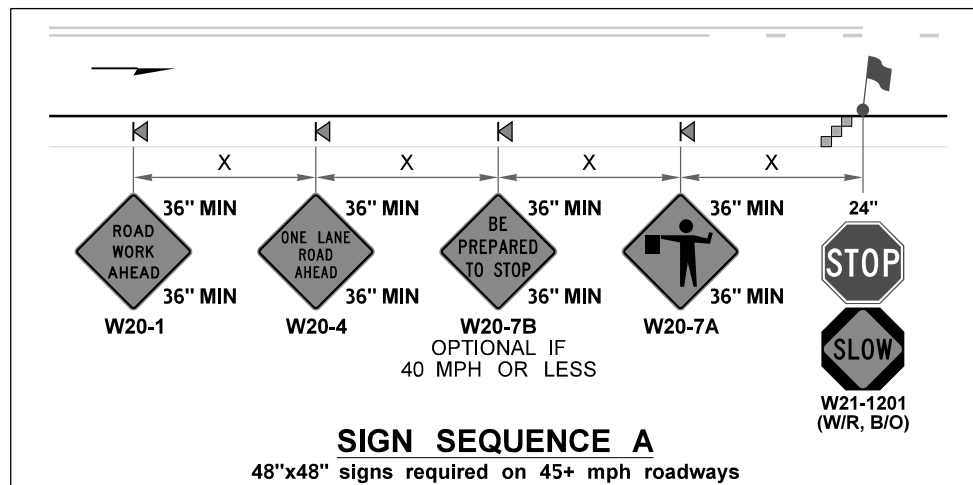
SHEET 1 OF 4 SHEETS

NOTES:

10. FOR LEGEND, TABLES, AND ADDITIONAL NOTES: SEE TC323, SHEET 1.

11. WORK MAY BRIEFLY OCCUR WITHIN LANE CLOSURE ACROSS INTERSECTING ROADWAY APPROACHES, BUSINESS ACCESSES, OR DRIVEWAYS. **MAY HOLD APPROACH OR ACCESS TRAFFIC FOR 5 MINUTES OR LESS** (ENGINEER MAY ACCEPT HOLDS UP TO 10 MINUTES) WHILE RESTRICTING TURNS FROM MAINLINE. CHANNELIZATION DEVICES DELINEATING APPROACH OR ACCESS MAY BE REMOVED OR RELOCATED AS NEEDED.

12. SINGLE FLAGGER (WITH RED FLAG/RED GLOW CONE FLASHLIGHT) MAY BE ADDED TO THE INTERSECTING ROADWAY APPROACH TO HELP GUIDE ALTERNATING & TURNING TRAFFIC.



PILOT CAR OPERATION FOR ALTERNATING 1-LANE, 2-WAY TRAFFIC: FLAGGER-CONTROLLED SHARED BIKE-VEHICLE LANE STRATEGY (45+ MPH HIGHWAYS)
NOT TO SCALE

FILE NAME	C:\Users\LintzF\OneDrive - Washington State Department of Transportation\Desktop\Work Zone TCPs\323Hwy45+AltTrafficFlaggerPilotCarOp.dgn				REGION NO.	STATE	FED.AID PROJ.NO.	Plot 2
TIME	1:53:48 PM				10	WASH		PLAN REF NO
DATE	4/2/2024							TC323
PLOTTED BY	LintzF				JOB NUMBER			SHEET
DESIGNED BY					CONTRACT NO.	LOCATION NO.		2
ENTERED BY								OF
CHECKED BY								4
PROJ. ENGR.								SHEETS
REGIONAL ADM.	REVISION	DATE	BY					TYPICAL TRAFFIC CONTROL PLANS



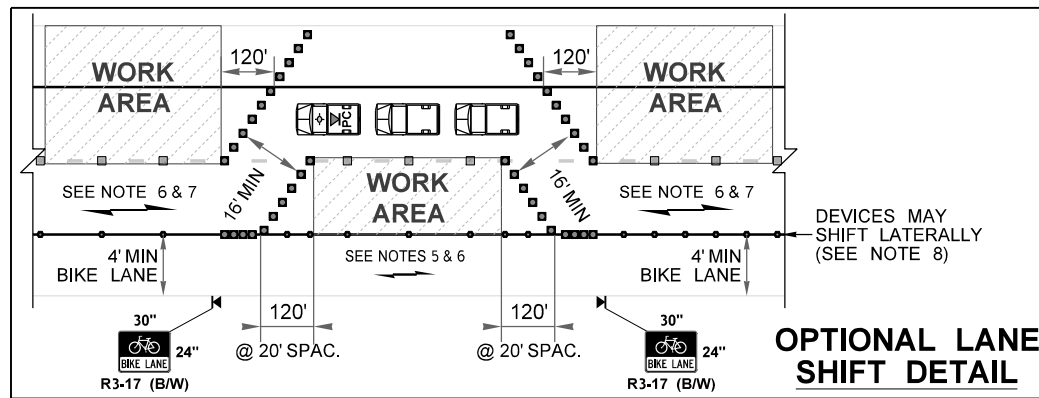
RECOMMENDED SIGN SPACING = X (1)		
RURAL HIGHWAYS	60-65 MPH	800±
RURAL ROADS	45-55 MPH	500±

(1) ALL SPACING MAY BE ADJUSTED TO ACCOMMODATE INTERCHANGE RAMPS, AT-GRADE INTERSECTIONS AND DRIVEWAYS.

LONGITUDINAL BUFFER SPACE = B					
SPEED (MPH)	45	50	55	60	65
B (feet)	360	425	495	570	645

Buffer space may be adjusted (±) based on field conditions.

MAXIMUM CHANNELIZATION DEVICE SPACING (feet)		
MPH	TAPER	TANGENT
50 - 65	10-20	80
45	10-20	60

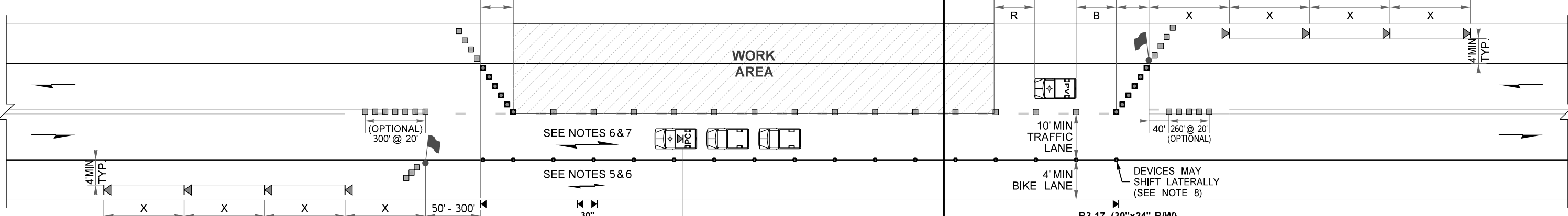


PROTECTIVE VEHICLE ROLL AHEAD DISTANCE = R
STRATEGICALLY POSITION WORK VEHICLE TO PROTECT WORK CREW.
40' - 80' RECOMMENDED.

STATIONARY TRANSPORTABLE ATTENUATOR ROLL AHEAD DISTANCE = R			
HOST VEHICLE WEIGHT LESS THAN 22,000 lbs.	HOST VEHICLE WEIGHT 22,000+ lbs.		
45-55 MPH	60+ MPH	45-55 MPH	60+ MPH
123'	172'	100'	150'

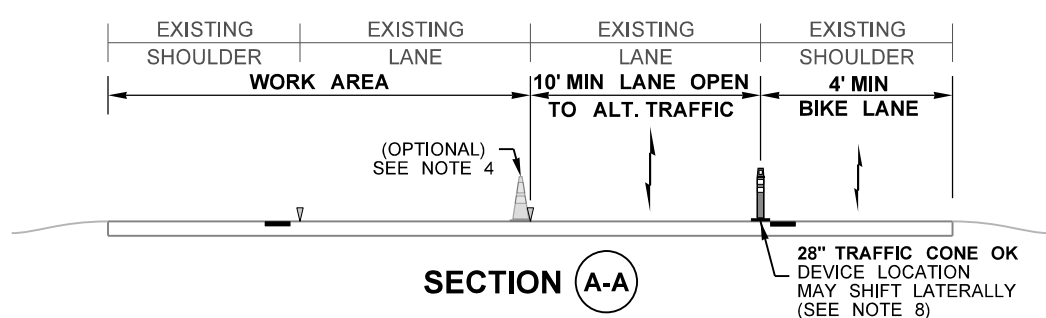


FOR DRIVEWAY, BUSINESS ACCESS, AND INTERSECTING ROADWAY DETAILS: SEE TC323, SHEET 4.



- NOTES:
- PLAN IS APPLICABLE ONLY WHEN LANE & PAVED SHOULDER IS AT LEAST 14 FEET WIDE.
 - AVOID PLACING LANE CLOSURE TAPERS WITHIN OR IMMEDIATELY FOLLOWING HORIZONTAL & VERTICAL CURVES BY ADJUSTING LONGITUDINAL BUFFER.
 - IF LONGITUDINAL BUFFER SPACE REDUCED FROM DISTANCES LISTED IN TABLE, UPGRADE PROTECTIVE VEHICLE (PV) TO A TRANSPORTABLE ATTENUATOR (TA). ADDITIONAL PVTAs MAY BE ADDED AT SEPARATE WORK CREWS.
 - MAY SHIFT LATERALLY. CHANNELIZATION DEVICE AT CENTERLINE OPTIONAL. 36" TRAFFIC CONES, 42" TALL CHANNELIZATION DEVICES, OR TRAFFIC SAFETY DRUMS OK.
 - BICYCLIST ACCOMMODATION: ALTERNATE BIKES IN THE SEPARATED 2-WAY, 4' MIN BIKE LANE
 - PEDESTRIAN ACCOMMODATIONS (ENGINEER TO ACCEPT ANY ALTERNATIVE STRATEGIES):
(A) ALTERNATE BOTH BIKE & PEDS IN THE SEPARATE 2-WAY, BIKE LANE (4' MIN, 8' WIDTH PREFERRED)
(B) PROVIDE FREE PED SHUTTLE (PILOT CAR, WORK VEHICLE, VAN, OR BUS MAY BE USED)
 - PILOT CAR OPERATOR TO DRIVE SPEED PRUDENT FOR WORK ZONE CONDITIONS, STOPPING TRAFFIC IF NECESSARY, UP TO A MAXIMUM SPEED OF 35 MPH (25 MPH AT LANE SHIFT).
 - 28" TRAFFIC CONE OK. DEVICE MAY SHIFT LATERALLY BUT PROVIDE 4' MIN BIKE LANE & 10' MIN TRAFFIC LANE.
 - SEE STANDARD SPECIFICATIONS FOR ADDITIONAL REQUIREMENTS:
1-07.8(1) HIGH-VISIBILITY APPAREL
1-10.3(1)A FLAGGERS AND NIGHTTIME ILLUMINATION
1-10.3(2)A TRAFFIC CONTROL PROCEDURES
9-35.1 24-INCH STOP/SLOW PADDLE SIZE
 - FOR PROJECT-SPECIFIC REQUIREMENTS, SEE SPECIAL PROVISIONS.
 - SIGNS ARE BLACK ON ORANGE UNLESS OTHERWISE INDICATED.
 - EXISTING PAVEMENT MARKINGS MAY VARY.

- LEGEND:
- TEMPORARY SIGN LOCATION
 - 28" REFLECTIVE TRAFFIC CONE (SEE NOTE 4)
 - OPTIONAL CHANNELIZATION DEVICE
 - 28" PORTABLE TUBULAR MARKER (SEE NOTE 8)
 - PROTECTIVE VEHICLE (SEE NOTE 3)
 - PILOT CAR (SEE NOTES 6 & 7)
 - MOTORIST VEHICLE
 - FLAGGER



PILOT CAR OPERATION FOR ALTERNATING 1-LANE, 2-WAY TRAFFIC: FLAGGER-CONTROLLED SEPARATED BICYCLE LANE STRATEGY (45+ MPH HIGHWAYS)

NOT TO SCALE

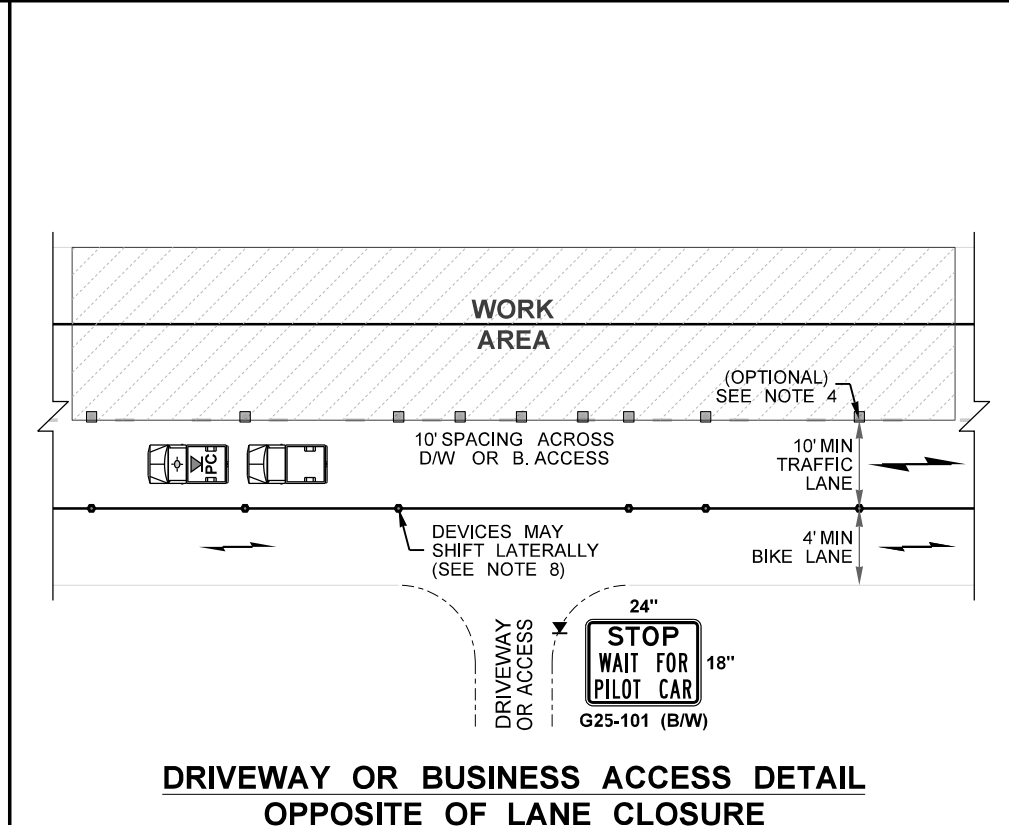
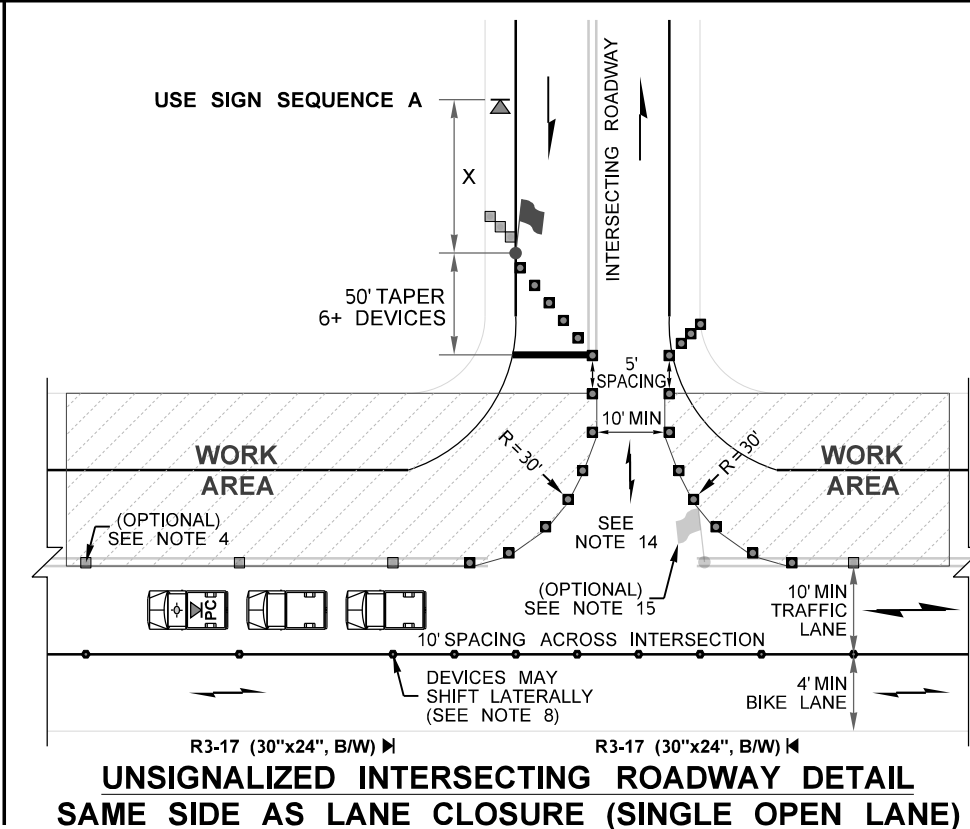
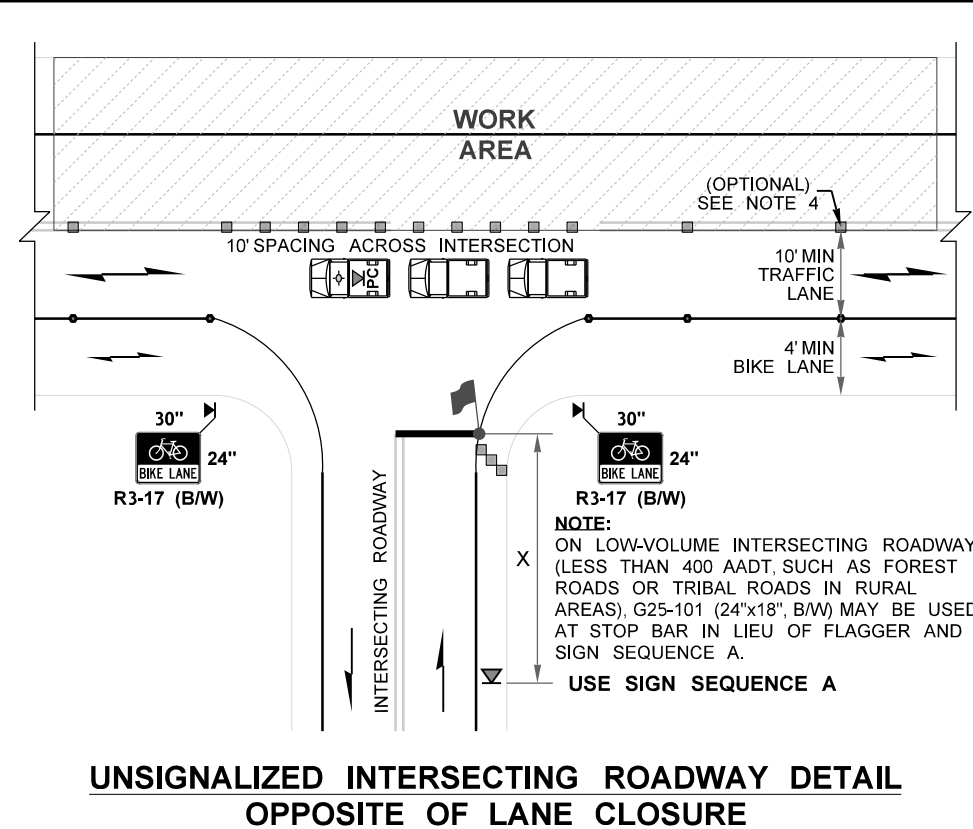
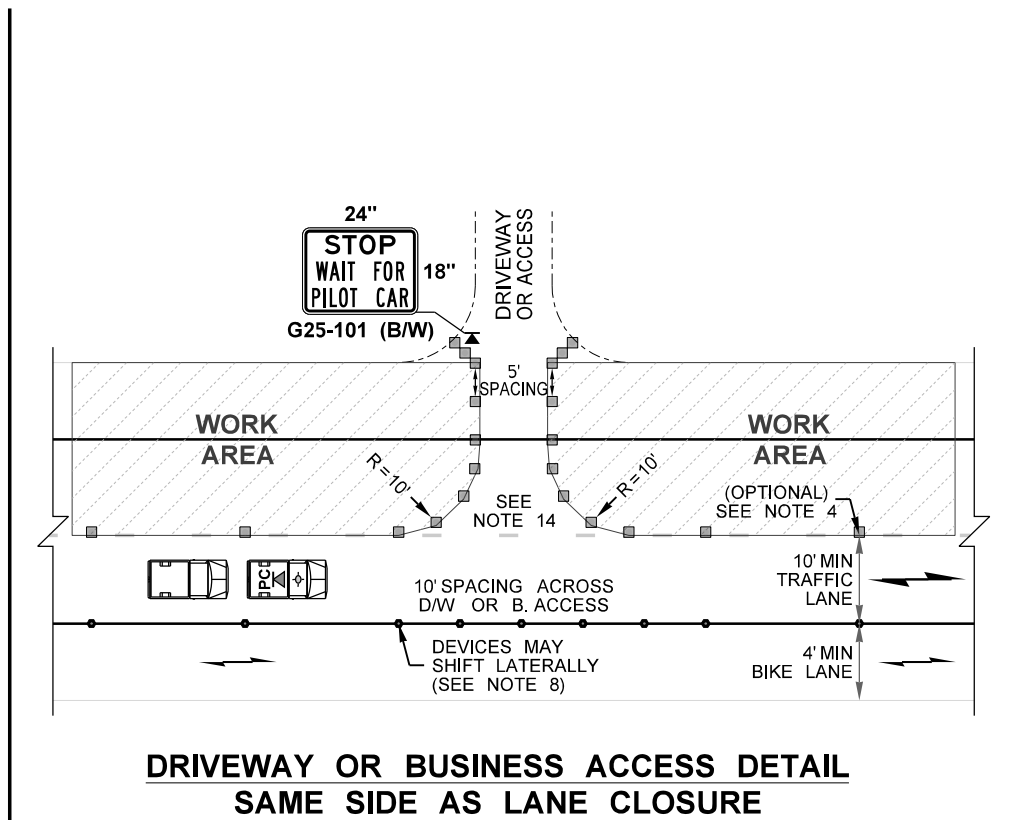
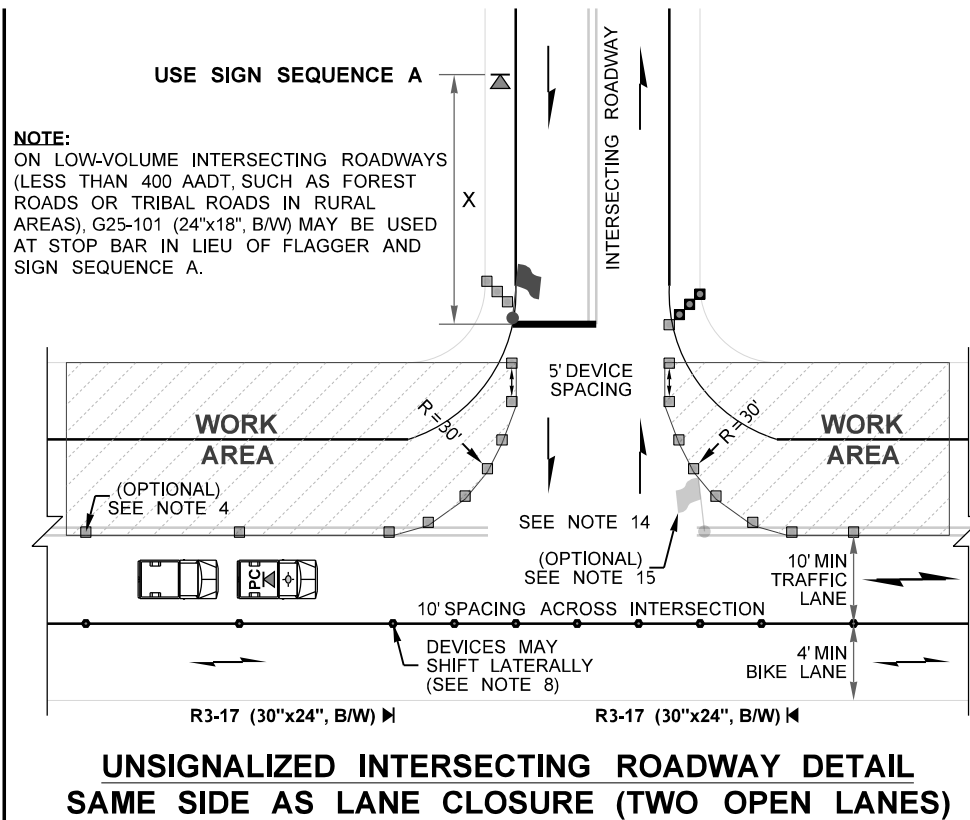
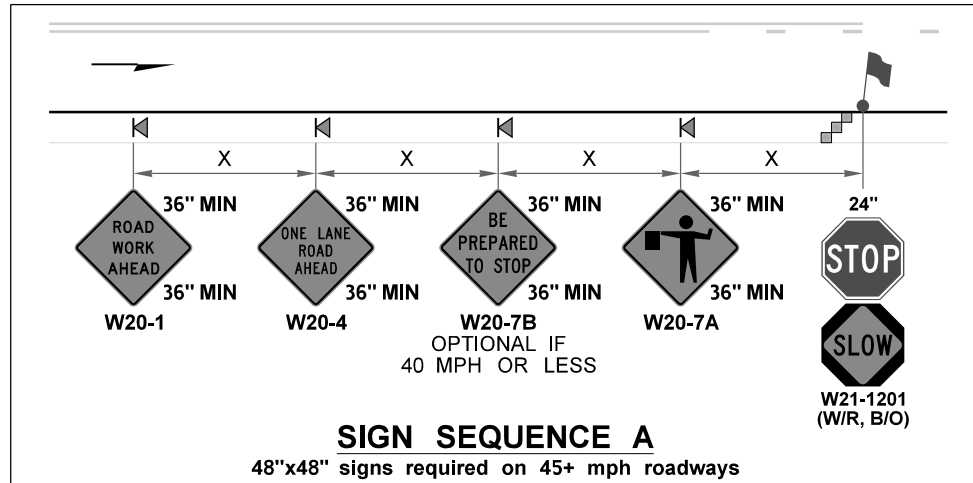
FILE NAME	C:\Users\LintzF\OneDrive - Washington State Department of Transportation\Desktop\Work Zone TCPS\323Hwy45+AltTrafficFlaggerPilotCarOp.dgn				Plot 3
TIME	1:53:49 PM				PLAN REF NO
DATE	4/2/2024				TC323
PLOTTED BY	LintzF				SHEET 3 OF 4 SHEETS
DESIGNED BY					
ENTERED BY					TYPICAL TRAFFIC CONTROL PLANS
CHECKED BY					
PROJ. ENGR.					Washington State Department of Transportation
REGIONAL ADM.	REVISION	DATE	BY		

NOTES:

13. FOR LEGEND, TABLES, AND ADDITIONAL NOTES: SEE TC323, SHEET 3.

14. WORK MAY BRIEFLY OCCUR WITHIN LANE CLOSURE ACROSS INTERSECTING ROADWAY APPROACHES, BUSINESS ACCESSES, OR DRIVEWAYS. **MAY HOLD APPROACH OR ACCESS TRAFFIC FOR 5 MINUTES OR LESS** (ENGINEER MAY ACCEPT HOLDS UP TO 10 MINUTES) WHILE RESTRICTING TURNS FROM MAINLINE. CHANNELIZATION DEVICES DELINEATING APPROACH OR ACCESS MAY BE REMOVED OR RELOCATED AS NEEDED.

15. SINGLE FLAGGER (WITH RED FLAG/RED GLOW CONE FLASHLIGHT) MAY BE ADDED TO THE INTERSECTING ROADWAY APPROACH TO HELP GUIDE ALTERNATING & TURNING TRAFFIC.



PILOT CAR OPERATION FOR ALTERNATING 1-LANE, 2-WAY TRAFFIC: FLAGGER-CONTROLLED SEPARATED BICYCLE LANE STRATEGY (45+ MPH HIGHWAYS)
NOT TO SCALE

FILE NAME	C:\Users\LintzF\OneDrive - Washington State Department of Transportation\Desktop\Work Zone TCPs\323Hwy45+AltTrafficFlaggerPilotCarOp.dgn			REGION NO.	STATE	FED.AID PROJ.NO.	Plot 4
TIME	1:53:49 PM			10	WASH		PLAN REF NO
DATE	4/2/2024			JOB NUMBER			TC323
PLOTTED BY	LintzF			CONTRACT NO.	LOCATION NO.		SHEET
DESIGNED BY							4
ENTERED BY							OF
CHECKED BY							4
PROJ. ENGR.							SHEETS
REGIONAL ADM.	REVISION	DATE	BY				TYPICAL TRAFFIC CONTROL PLANS



WORK ZONE MICROSTATION CELLS: Updated work zone cells incorporated (April 2024).

WSDOT CAE automatically updates cell libraries on WSDOT and on-site consultant staff computers (no action needed); however, external users or off-site consultants must manually install them. For additional information e-mail HQCAEHelpDesk@wsdot.wa.gov.

Division 4 in WSDOT Plans Preparation Manual, Section 400.06(29), provides updated work zone cell library policy and information for PS&Es. See <https://wsdot.wa.gov/engineering-standards/all-manuals-and-standards/manuals/plans-preparation-manual>

TYPICAL TCP USAGE EXPLANATION:

- Plot 1:** Pilot Car Operation for flagger-controlled 1-lane, 2-way alternating traffic on the mainline for 45+ mph 2-lane highways with a shared bicycle-vehicle lane.
- Plot 2:** Details for intersecting roadways and driveway/business access for Plot 1.
- Plot 3:** Pilot Car Operation for flagger-controlled 1-lane, 2-way alternating traffic on the mainline for 45+ mph 2-lane highways with a separated bicycle lane. Separated bike lanes maximize vehicle capacity (minimizing queue & delays) especially when high bicycle volumes are expected and mainline flaggers are 1500'+ apart.

Plot 4: Details for intersecting roadways and driveway/business access for Plot 3.

Note: For temporary rumble strip versions of these plans, see Typical TC324.

Other Alternating Traffic TCPs (45+ mph): See Typical Traffic Control Plan Library (<https://wsdot.wa.gov/engineering-standards/all-manuals-and-standards/plan-sheet-library/work-zone-typical-traffic-control-plans-tcp>)

- * TC320s for other variations of flagger-controlled alternating traffic plans
 - * TC330s for AFAD-controlled alternating traffic plans
 - * TC340s for temporary signal-controlled alternating traffic plans
 - * TC350s for traffic holds
- If not published yet, they will be added in the future.

Other Alternating Traffic TCPs (40 mph or less): See Typical Traffic Control Plan Library (<https://wsdot.wa.gov/engineering-standards/all-manuals-and-standards/plan-sheet-library/work-zone-typical-traffic-control-plans-tcp>)

- * TC420s for flagger-controlled alternating traffic
 - * TC430s for AFAD-controlled alternating traffic
 - * TC440s for temporary signal-controlled alternating traffic plans
 - * TC450s for traffic holds
- If not published yet, they will be added in the future.

DESIGNER NOTES:

- A. Contact Region Transportation Operations to determine which Typical TCP(s) to utilize, as there are several variations available (or soon will be).
- B. These typical traffic control plans may be modified for site specific situations and/or WSDOT Region Transportation Operations standard practices. **Typical TCPs are not "Standard Plans".**
- C. **Do not use intermittent (old: "variable") regulatory work zone speed limit reductions for flagging or AFAD operations.** Instead, maintain the existing speed limit (or continuous regulatory work zone speed limit reduction, if applicable). See WSDOT Traffic Manual Section 5-18 and Executive Order E1060 regulatory speed limit reductions & advisory speed approval policy for work zones thru Region Transportation Operations.
- D. See MUTCD Table 6F-1 for additional temporary sign size information. Work zone signs are usually smaller than those used permanently.
- E. WAC 468-95-300 modifies MUTCD Table 6-1 "Recommended Advance Warning Sign Minimum Spacing". Sign spacing may be adjusted for field conditions based on engineering judgement. The Sign Spacing table is acceptable to use in Typical TCPs; however, site-specific traffic control plans should include actual sign spacing values (with Å) that have been verified in the field, on SR view, or via Google Maps.
- F. When positioned behind channelizing devices, temporary signs should be mounted at 5' minimum.
- G. The work zone design speed is typically the posted speed limit (or the work zone speed limit when in effect). For split speed limits (SPEED LIMIT 65 TRUCKS 60), use the higher 65 mph for work zone design. For this Typical TCP, the work zone design speed is based on the existing posted speed limit for sign spacing, channelizing device spacing, buffer, and roll ahead distances.
- H. "Flagger tapers" are always 50'-100' per closed lane with 6 devices minimum (10'-20' spacing on the taper), regardless of the posted speed limit or lane width per MUTCD 6C.08, Paragraph 15. Never use "L" for these tapers.
- I. Channelization devices types may be modified (vertical panel channelizing devices prohibited). 28" reflective traffic cones are recommended on flagger-controlled alternating traffic (especially for access delineation to maintain visibility for turning motorists). 36" reflective traffic cones, 42" tall channelizing devices, or traffic safety drums may be used. Warning lights on channelizing devices is being phased out in Washington. Contact Region Transportation Operations for information regarding their standard practices.
- J. Maximum channelizing device spacing table for tangents is based on WAC 468-95-301 and may ALWAYS be reduced.
- K. Sequential arrow boards are prohibited at flagger tapers per WSDOT standard practice and per MUTCD Guidance TA-10.
- L. Per MUTCD Section 6C.06, longitudinal buffer spaces are optional. Using longitudinal buffer spaces listed in MUTCD Table 6C-2 is recommended as best practice when feasible, but may be adjusted based on engineering judgement. The Longitudinal Buffer Space table is acceptable in Typical TCPs; however, site-specific traffic control plans should include actual buffer distances that have been verified in the field, on SR view, or via Google Maps.
- M. The lateral buffer (transverse distance between open travel lanes and work area) is optional. No lateral buffer has been provided in these Typical TCPs due to the low speeds of alternating traffic. Actual work area limits may be modified.
- N. WSDOT best practice is to place a protective vehicle (PV) in the closed lane in advance of the work area for flagger-controlled alternating traffic, but provide a full longitudinal buffer space to provide errant vehicles an opportunity to stop at the posted speed limit on 45+ mph roadways before impacting the PV. If the longitudinal buffer distance must be reduced or eliminated on 45+ mph roadways with flagger-controlled alternating traffic, then upgrade the PV to a transportable attenuator (TA). Additional PVs (or TAs) may be added prior to multiple work crews within a work area. Contact Region Transportation Operations for their standard practice.
- O. Placing channelizing devices transversely (at 45° and 5-foot spacing) is an optional strategy to stop move errant drivers traveling within the closed lane(s) but is not shown in the Typical TCP.
- P. The downstream taper of 50'-100' is required on 1-lane, 2-way traffic configurations.
- Q. Duration of traffic holds for driveways, business accesses, and/or roadway approaches is listed as 5 minutes (1 minute on high volume highways) in this Typical Traffic Control Plan, but may be adjusted. Contact Region Transportation Operations for additional guidance.

PILOT CAR OPERATION FOR ALTERNATING 1-LANE, 2-WAY TRAFFIC: FLAGGER-CONTROLLED (45+ MPH HIGHWAYS)

	INFORMATIONAL USE ONLY	Plot 5
	DO NOT INCLUDE THIS SHEET IN CONTRACT PS&Es or TCP SUBMITTALS.	TC323
	DESIGNER GUIDANCE	